

N-MC-BB-R

MCP accessory, intelligent manual call point back box, red

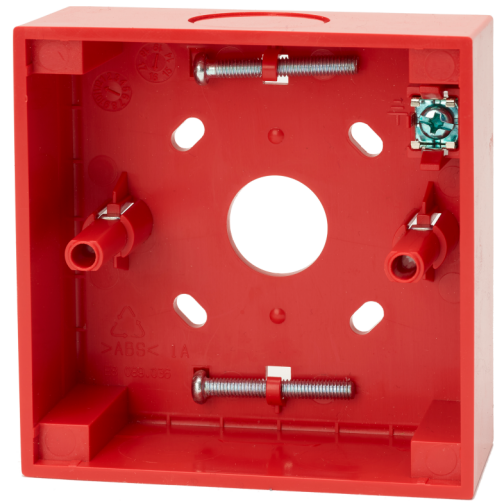
General

The N-MC-BB-R is a surface mount back-box for DM3000, KAL750 and ZP780 series manual call points. It offers cable entry from behind when used with hidden cable trunking, or cable entry from the top and bottom when surface mount cable trunking is used. Suitable mounting screws to fit the compatible manual call point to the back box are conveniently housed in the base of the box. A screen connection terminal is provided for convenient cable screen connection when used in electricity noisy environments.

Easy to install

Adjustable screw mounting holes allows for perfect alignment of the back box even if the drilled holes are not exactly level. The flexibility of cable entry from the large opening in the rear, or the dust proof knockouts at the top and bottom of the unit greatly enhances the applications possible for fitting in all types of installations. The back box may be rotated through 180° to position the selected entry orientation in the most convenient location at the top or the bottom of the unit.

A perfect fit between the back box and the manual call point front is guaranteed by device alignment guides that avoid misalignment of the back box with the front part, presenting the manual call point as a single aesthetic product on the wall.



Details

- Compatible with quality wall boxes and MCPs
- Rear and side cable entry using a single unit
- Suitable screws provided for MCP fitting
- Screen connection terminal for electrically noisy installations
- Alignment holes for wall mounting allows for perfect horizontal alignment
- Aligns perfectly with the NC-MC series conventional, as well as DM3000, KAL750 and ZP780 series addressable MCPs to provide a smooth aesthetic single unit finish

N-MC-BB-R

MCP accessory, intelligent manual call point back box, red

Technical specifications

General

Compatibility	Aritech, Kilsen, Ziton manual call points
---------------	---

Electrical

Terminals	1 (cable screen)
-----------	------------------

Physical

Physical dimensions	87.1 x 87.1 x 35 mm (W x H x D)
---------------------	---------------------------------

Net weight	60 g
------------	------

Colour	Red (RAL 3028)
--------	----------------

Mounting type	Wall mount
---------------	------------

Cable entries	3 side, 1 rear
---------------	----------------

Material (body)	Noryl SE100 (self-extinguishing)
-----------------	----------------------------------

Environmental

Vandal proof	No
--------------	----

Operating temperature	-25 to +72°C
-----------------------	--------------

Storage temperature	-25 to +72°C
---------------------	--------------

Relative humidity	10 to 95% noncondensing
-------------------	-------------------------

Environment	Indoor
-------------	--------

Regulatory

Compliance	REACH, RoHS 2, WEEE
------------	---------------------



As a company of innovation, Carrier Fire & Security reserves the right to change product specifications without notice. For the latest product specifications, visit firesecurityproducts.com online or contact your sales representative.

Last updated on 23 June 2023 - 10:08