

# WAGO THERMAL TRANSFER *smart*PRINTER

## Hardware Installation Instructions

Thank you for choosing WAGO's Thermal Transfer *smart*PRINTER. This printer marks: labels, marking strips and markers for all WAGO terminal blocks, as well as wire/cable markers and devices. The *smart*PRINTER is fast and easy to use, providing wipe- and scratch-proof markings, while only requiring a single ink ribbon for all print jobs.

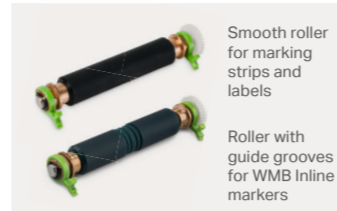
The printer features a USB interface and connects to any network via ETHERNET. WAGO's *smart*PRINTER is portable and can be used anywhere thanks to its light weight and compact design.

### Thermal Transfer *smart*PRINTER- Item No. 258-5000

- Includes:
- 1 *smart*PRINTER
- 1 marking strip reel
- 1 WMB Inline reel
- 1 reel holder
- 2 rollers
- 1 ink ribbon
- Power cable
- USB cable



**2 Rollers**  
Item No. 258-5006  
Roller for marking strips and labels



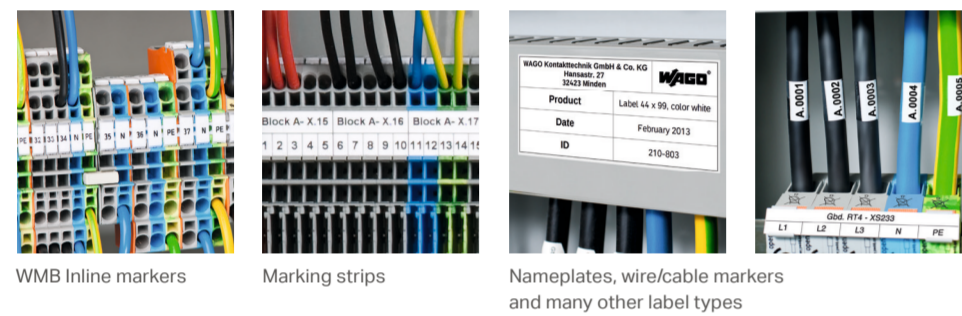
Item No. 258-5007  
Roller for WMB Inline markers



**1 Ink Ribbon**  
Item No. 258-5005  
incl. 1 cardboard roll



### *smart*PRINTER marks WAGO terminal blocks, wires/cables and devices.



WMB Inline markers    Marking strips    Nameplates, wire/cable markers and many other label types

### Note:

Both printer and marking media information is available at [www.wago.com/printer](http://www.wago.com/printer). For software information, visit [www.wago.com/smartprinter](http://www.wago.com/smartprinter).

Additional customer service is available via email at: [smart\\_printer@wago.com](mailto:smart_printer@wago.com) or by phone: +49 (0) 571 887 630.

## A. Printer and Ink Ribbon Installation

**Note:**  
Do not use this printer until you have thoroughly read and completely understood these instructions!

Place the printer on an even, stable and dry surface.

1 Open the cover by simultaneously pulling the two green levers located on each side toward the front of the printer.

2 Then lift the cover up as far as it will go.

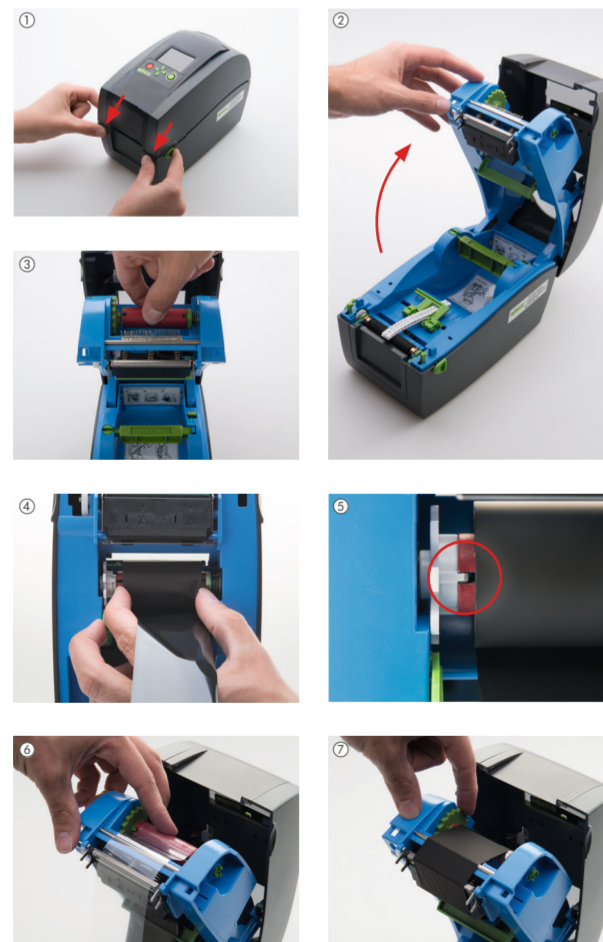
3 Insert the red cardboard roll for the ink ribbon directly under the cover. To do so, place the cardboard roll on the right of the spring-loaded roll holder and push it against the spring's pressure to mount. On the left, the groove locks into the cardboard roll's notch.

4 The ink ribbon holder is easily recognizable by its white knob (below the red cardboard roll). Insert the ribbon with the matte black side facing out and slide it onto the roller holder until it is centered. Press lightly against the spring while doing this.

5 The ink ribbon is in place when the knob locks into the ink ribbon's groove. Slight resistance must be felt when pulling on the ink ribbon.

6 Secure the transparent strip of the ink ribbon to the red cardboard roll using the adhesive side of the strip.

7 Turn the green knob until the transparent section of the ink ribbon is completely wound around the roll. Now, the ink ribbon is securely mounted on the cardboard roll.



## B. Roller Change

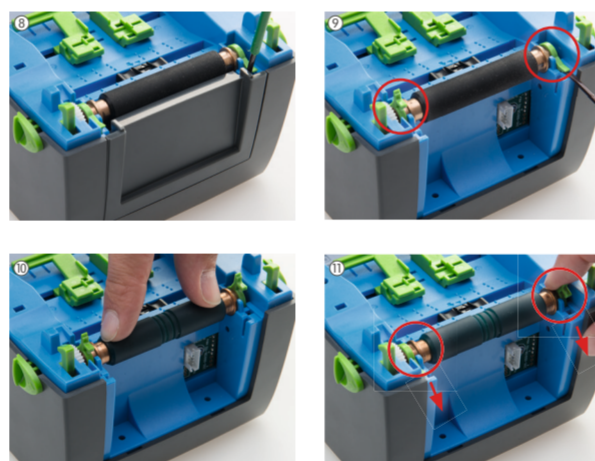
Insert the smooth roller into the printer to print marking strips and labels. Insert the roller with guide grooves when printing WMB Inline markers.

8 Remove the tear-off plate at the front of the housing.

9 Lift up the green locking levers on both ends of the roller.

10 Insert the new roller in straight position.

11 Then push the two green locking levers back down.



**Notice:**  
Rollers for other Inline variants are not included in the standard package and must be ordered separately!

**Note:**  
Clean the roller and the print head regularly (at least once a month). Roller cleaning guarantees constant high-quality printing.

## C. Media Installation

First, mount the marking media reel on its holder. Then, place the reel holder behind the printer.

12a) The marking strip is fed to the printer in a clockwise direction.

12b) WMB Inline markers are fed to the printer in a counter-clockwise direction.

13 Open the printer and feed the media from the back of the printer through the opening.

14 Pull the media through the green guides toward the roller.

15 Move the green guides in to match the media width. Align the markers exactly to the roller guide groove.

16 Press and release the locking tab. When closing the printer cover, make sure it locks into place.



## Software Installation Instructions and Printer Settings

### D. Printer Driver Installation

**Note:**  
The following installation steps require administrative rights and the input of addresses within your network. Contact your IT department for assistance regarding the network addresses that will need to be used.

#### a) via USB for stand-alone P

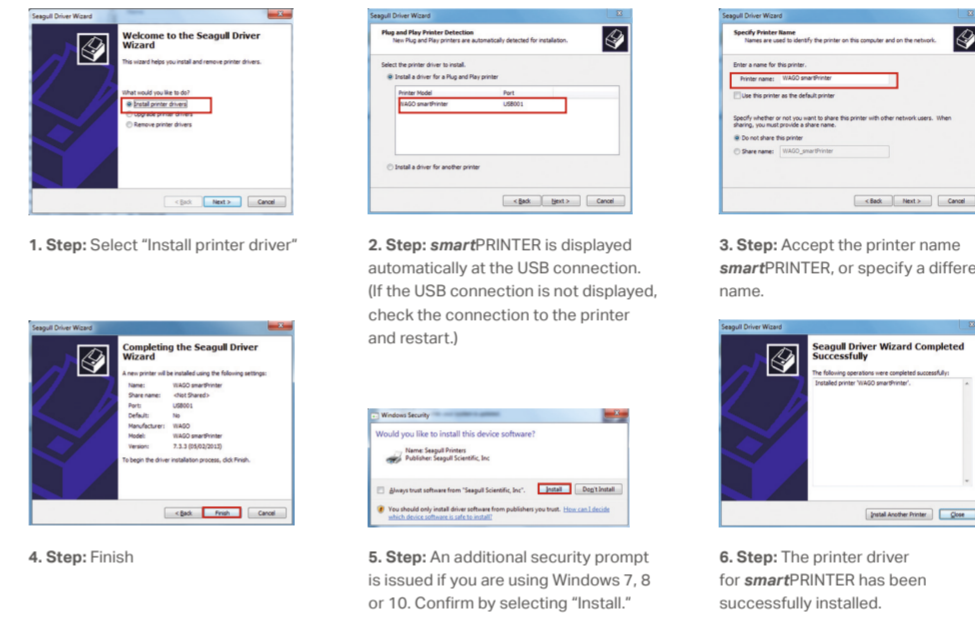
Connect the *smart*PRINTER to your PC with the USB cable and to the mains using the power cable. Press the red button located on the front panel of the printer to turn on the printer. Download the installation package from [www.wago.com/smartprinter](http://www.wago.com/smartprinter).

Then run the "smartPrinter\_Installation\_Package.exe" file. Select "Install driver" from the installation menu. Consult your IT department for the addresses you need to specify.



Ignore this Windows message if it appears at the bottom of the display.

### Follow the instructions given in the driver installation program (Driver Wizard):



### D. Printer Driver Installation

**Note:**  
The following installation steps require administrative rights and the input of addresses within your network. Contact your IT department for assistance regarding the network addresses that will need to be used.

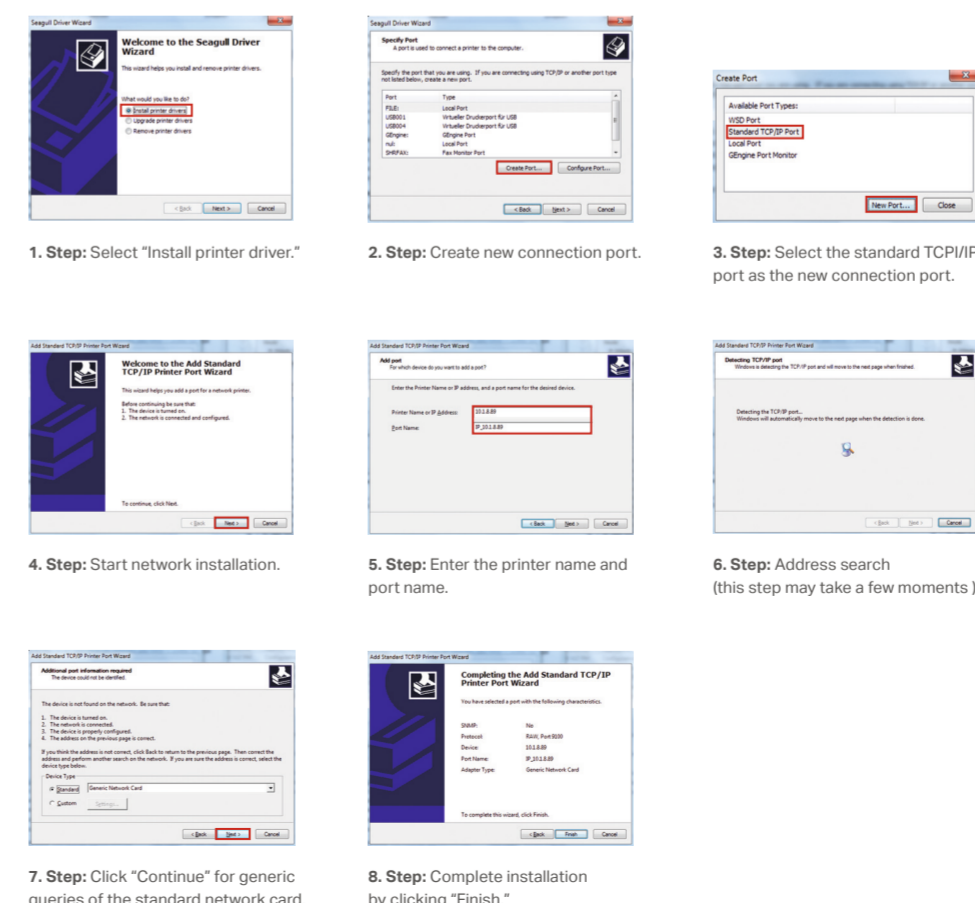
#### b) for a network (step 2)

For network installation, connect *smart*PRINTER to the mains using the power cable and switch the printer on.

Select "Install driver" from the installation menu.



### Follow the instructions given in the driver installation program (Driver Wizard):



### D. Printer Driver Installation

#### b) for a network (step 1)

INFO: DHCP is disabled in the delivery state of *smart*PRINTER. When connecting *smart*PRINTER to a PC network instead of using a USB cable, the printer must be prepared as follows:

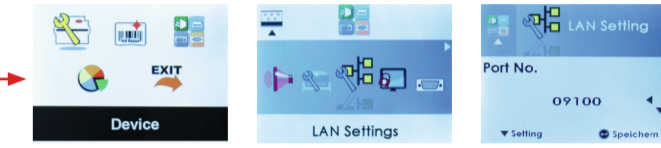
Preparation for a network with DHCP server: For detailed installation steps, go to [www.wago.com/smartprinter](http://www.wago.com/smartprinter).

Preparation for a network without DHCP server: You must use the printer display to enter the required settings. To do this, switch on the printer and follow the steps below as shown on the display.



**Start:** Press the On/Off button; "Ready" appears in the display.

1. Step: Hold the right control button pressed for three seconds until the menu symbols appear.



2. Step: Use the control button to select the "Accessories" menu and then press Enter.

3. Step: Select the sub-menu "LAN Setting" and then press Enter.

**Note:**  
You can set the language via the display. Go to Settings > Language

4. Step: Check Port No. Default value is 09100.

5. Step: DHCP is disabled as a default setting. If you are using a static IP address, "Disable" the DHCP setting.

6. Step: Set the IP address for the standard gateway of your network environment.

7. Step: Enter your static IP address.

8. Step: Enter the subnet mask for your own network topology.



On/Off    Control buttons    Enter key

## E. "Printer Settings" Installation: Settings for Marking Media

The WAGO "Printer Settings" Software must be used prior to initial startup and after changing media. This sets the printer for using WAGO marking media.

For this, select "Install Printer Settings" from the installation menu. No input is required during installation. Simply click "Continue" when requested.

The software starts automatically after it has been successfully installed. An icon is simultaneously created on your desktop. Proceed as follows in the input dialog windows as illustrated below:

1 Select printer.

2 Select the type of media (e.g., marking strip).

3 Select the media item no. After this, the printer slightly advances the media forward in the printer as part of a pre-print check until "Ready" appears on the display.

4 Click on the blue gearwheel symbol to make fine adjustments or individual media settings. In a new mask, you can align the marking either vertically or horizontally, or you can optimize the printing intensity by adjusting the thermal settings for the media.

5 Settings have been saved when the confirmation "Settings successfully imported" is displayed.

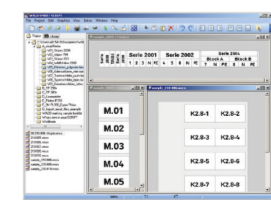


**Fine adjustment of the marking media:**  
Raise/Lower horizontal value > Shift characters to right/left  
Raise/Lower vertical value > Shift characters up/down  
Raise/Lower thermal value > Darker/Lighter printing

**More information about text/character alignment is available at:** [www.wago.com/smartprinter](http://www.wago.com/smartprinter).

## F. *smart*SCRIPT Installation: WAGO Marking Software

*smart*SCRIPT provides all necessary marking templates for all WAGO terminal blocks, as well as labels, wire/cable markers and push-button/type plates. Select "Install *smart*SCRIPT" from the installation menu. No input is required during installation. Simply click "Continue" when requested.



After successful installation, a new symbol is added to your desktop.

For quick marking using *smart*SCRIPT, we recommend our Quickstart instructions located in the download area at [www.wago.com/printer](http://www.wago.com/printer). These instructions provide you with information about the quickest way to mark marking strips or labels.