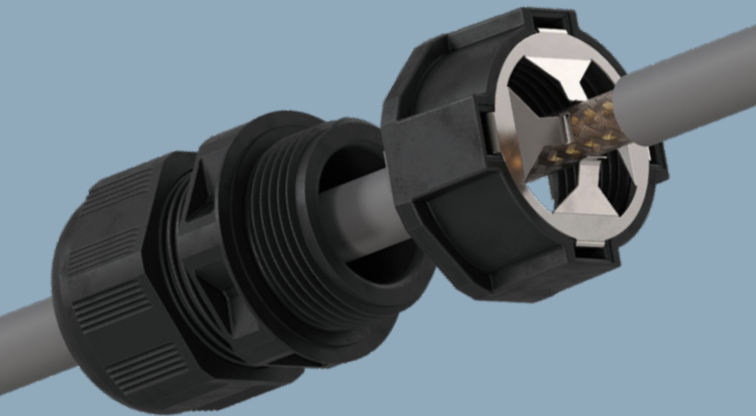


WISKA ®
make power smile



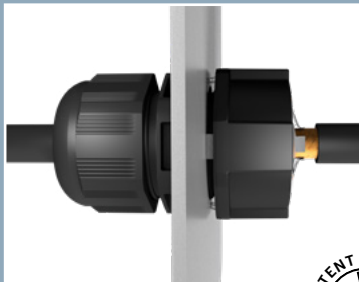
MagikNUT
The polyamide EMC locknut



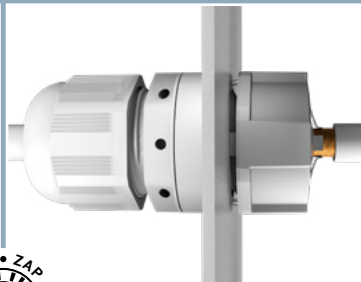
One solution

The MagikNUT has been designed as a complete solution acting as both a locknut and EMC shield connection.

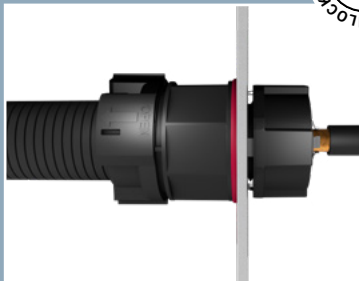
Installation variants



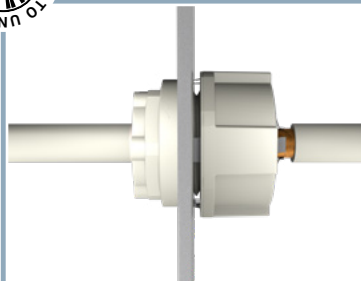
MagikNUT in use with an IP68 / IP69 polyamide ESKV cable gland.



MagikNUT in use with an IP68 / IP69 polyamide VentGLAND®.



MagikNUT in use with polyamide IP68 BraceFITTING and BraceCONDUIT.



MagikNUT in use with an IP66 membrane grommet QUIXX® (EMS).

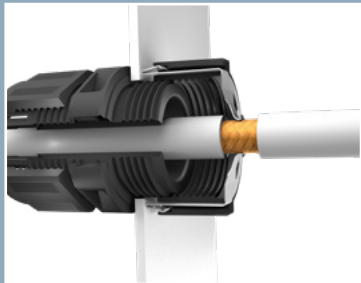
Installation



Assemble the ESKV cable gland with the MagikNUT.



Strip 1 cm off of the cable insulation revealing the EMC shielding.



Insert the cable through the gland and MagikNUT, stop when the shielding touches the claws on the MagikNUT.



Tighten cap nut of ESKV cable gland.

A “Magik” performance!

Using our cable management expertise, we have again developed a new and unique solution: **The MagikNUT!**

The MagikNUT is a polyamide locknut with a built-in stainless steel clip mechanism for EMC shield connections.

The MagikNUT can be used with **plastic cable glands** and plastic fittings, offering users a high level of EMC protection, quick installation time and savings in material costs.

MagikNUT can be used with a wide range of WISKA cable entry products.
(Here: *ESKV cable gland*)



Scan the Zapcode to find out more about the MagikNUT.

Available in M16, M20 and M25.



Polyamide outer body.

EMC shield protection through internal stainless steel clip.

Available in 2 colours:



Locknut

Lightweight design:

M16 – 4.52 g

M20 – 5.79 g

M25 – 6.98 g

Our cable management solutions



SPRINT
by WISKA

BRACE
by WISKA

Our various cable entries from cable glands to membrane grommets and cable protection offer solutions for every application – and all of them work seamlessly with the MagikNUT.

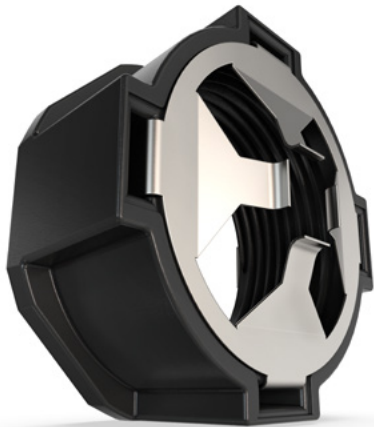
Our **SPRINT® system** comprising of polyamide, brass and stainless steel cable glands allows cap nuts, sealing inserts, EMC inserts and fittings to match in any combination. Our **BRACE® system** includes a polyamide range of fittings, conduits and conduit clips, with metal versions available.

Quality matters

Our products are developed and tested extensively, ensuring they **meet the highest demands under the toughest of conditions.**

These tests are conducted by our team of highly skilled designers and engineers at our state of the art laboratory facilities in Germany.





WISKA Hoppmann GmbH

Kisdorfer Weg 28
24568 Kaltenkirchen
Germany

contact@wiska.de
www.wiska.com



Download the
FREE Zappar
App.



Download on the
App Store



Scan the target
to unlock AR
content.



GET IT ON
Google Play