

### Hand tools



# HAND TOOLS

### Stone Hammer

- 45# Carbon steel forged head
- Heat-treated striking face, HRC45~60
- Fiberglass handle absorbs shock & vibration
- Tensile resistance of handle from head over than 3,000N

SAP Code	Specification
AOF379	4 lbs



### Machinist Hammer

- 45# Carbon steel head, drop forged
- Heat-treated, striking face HRC45~60
- Rugged 50 percent fiberglass handle
- Square and tapered striking faces
- Cushioned textured Non-slip rubber grip
- Tensile resistance of handle from head over than 4,500N

SAP Code	Specification
AOF378	200 g



### Ball-Pein Hammer

- 45# Carbon steel head, drop forged
- Fully heat-treated & polished face, striking face HRC45~60, ball head HRC35~55
- Fiberglass handle absorbs shock & vibration
- Textured rubber ensures a comfortable, secure grip
- Tensile resistance of handle from head over than 3,400N

SAP Code	Size	L (mm)
AOF377	8 oz	335



### Dead Blow Hammer

- Absorb the impact of strike

SAP Code	Type	Specification
ANZ717	450G	1 LB
ANZ718	225G	0.5 LB
ANZ719	680G	1.5 LB



### Retractable Scraper

- Retractable blade for safe storage
- 5 PC blades included
- Non-slip Bi-material handle



ANZ726

### Scissors

- Stainless steel blade, HRC48~52
- Non-slip Bi-material handle

SAP Code	Type
ANZ712	275mm



### Scissors

- Stainless steel blade, HRC48~52
- Non-slip Bi-material handle

SAP Code	Type
ANZ713	180mm



### Cold Chisel

- Drop forged 40Cr blade
- Heat-treated, HRC48~55
- Bi-material hand guard

SAP Code	Type
ANZ711	16 x 300mm



### Concrete Chisel

- Drop forged chrome-vanadium steel blade
- Heat-treated, HRC53~60 (striking face HRC32~46)
- Powder coating finish for increased visibility
- Ergonomic comfort grip handle with Bi-material hand guard
- Ideal for cutting through and breaking up concrete

SAP Code	Size
AOF383	12" (305mm)



### 6 PC Pin Punch Set

- Chrome-Vanadium steel
- 1.5, 3, 4, 5, 6, 8mm

SAP Code	Size
ANZ714	150mm

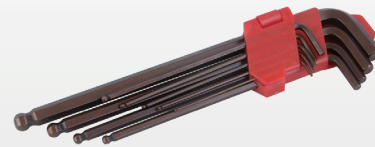


### 9 PC Long Ball End Hex Key

- S2 steel
- 2-component clip
- Black finish



SAP Code	Size
ANZ721	1.5, 2, 2.5, 3, 4, 5, 6, 8 & 10



### 8 PC Torx Key Set

- Chrome-Vanadium steel
- Black finish



SAP Code	Size
ANZ722	T-9, 10, 15, 25, 27, 30 & 40



### 8 PC Hex Key Set

- Chrome-Vanadium steel
- Black finish



SAP Code	Size
ANZ723	1.5, 2, 2.5, 3, 4, 5, 6 & 8 mm



### Ratchet Handle

- Chrome-Vanadium steel
- Quick release
- 72 teeth ratchet
- Satin finish



SAP Code	Type
ANZ716	3/8"



### Demolition Bar

- Strong one piece forged steel construction
- Working end HRC35~45
- Integrated nail pulling function

SAP Code	Size
AOF382	24" (600 mm)



### Pry Bar

- Drop forged chrome-vanadium steel
- Heat-treated to resist bending and breaking, HRC35~45
- Angled chisel end for extra leverage when prying
- Slim tapered end with fine point tip
- Powder coating finish

SAP Code	Size	Angled
AOF381	36"	30°



### Pry Bar

- 42Cr-Mo
- Heat-treated, HRC37~40

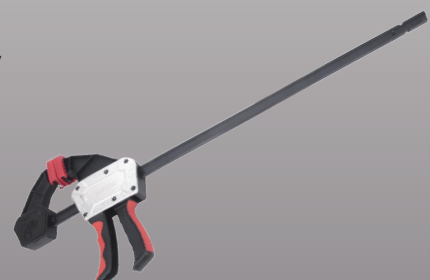
SAP Code	Size
ANZ728	13"



### Heavy Duty Rapid Bar Clamp & Spreader

- Non-marring pad – protect work piece finish and grip securely
- Quick-release, reversible jaw – converts clamp to a spreader quickly and easily
- Moveable jaw is easy released – by only pulling the rear handle back
- I-beam bar – resists twisting & bowing

SAP Code	Clamping capacity
AOF375	18" (457 mm)



### 8" Half Round File

- Coated teeth for durability
- Comfortable rubber grip handle



SAP Code	L (mm)	Diamond grit
AOF369	310	Fine
AOF370	310	Medium
AOF372	325	Coarse



### 8" Round File

- Coated teeth for durability
- Comfortable rubber grip handle



SAP Code	L (mm)	Diamond grit
AOF371	310	Medium
AOF373	325	Coarse



### Triangle Handle Industrial Screwdriver Set

- Grip designed for greater comfort
- Platinum chrome-plated blades resist rust
- All screwdrivers feature magnetic-tip blades



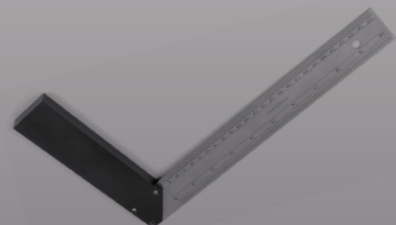
SAP Code	Size
AOF367	T15*100, T20*100, T25*100, PZ1*100, PZ2*150, PZ2*40, PZ3*150, ph0*75, ph1*150, ph2*100, ph3*150, ph2*40, ph1*100



### Square Angle

- Etched Stainless Steel blade, 1mm thickness
- High quality Aluminum handle

SAP Code	Size
ANZ710	250mm



### Vernier Caliper

- Inside, outside, depth and step measurements
- Accuracy to 0.02mm and 1/100 in.

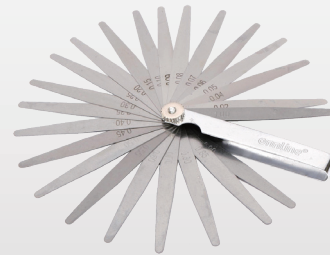
SAP Code	Specification
ANZ715	150(6in.) x 0.02mm(1/1000in.)



### 23-Blade Feeler Gauge

- Thickness range 0,05-1mm
- Blade width: 12 mm

SAP Code	Blades (mm)
AOF386	0.03, 0.04, 0.05, 0.06, 0.07, 0.08, 0.09, 0.10, 0.15, 0.20, 0.25, 0.30,
	0.35, 0.40, 0.45, 0.50, 0.55, 0.60, 0.70, 0.80, 0.85, 0.90, 1.00



### Magnetic Tray

- Stainless Steel

SAP Code	Size
ANZ727	150mm



### Professional Hacksaw

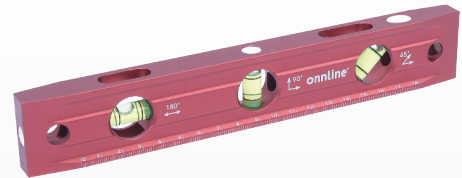
- Heavy duty tubular frame for strength and durability
- High tension blade for easy cutting
- Soft grip handle
- Bi-material blade, 24TPI
- Saw blade teeth HRC 50-65

SAP Code	L (mm)	Blade size
AOF366	415	12" (305mm)



### 9" Heavy Duty Torpedo Level

- Highly visible vials read 180, 90, 45
- Heavy duty all aluminum frame
- Top read windows for convenience
- Laser etched SAE & metric scales
- Strong holding magnetic edge
- Accuracy 1.0/1000



SAP Code	L (mm)	Vials
AOF384	230	3

### Water Level Magnetic

- Box style with silver colour
- Double milled surface
- Three vial: 180, 90 and 90
- Rubberized handle
- Shockproof end caps
- Accuracy: 0.5mm/m



SAP Code	Size
ANZ720	600mm

### Tool Bag

- Water resistant PE base
- Nylon material, 1680D

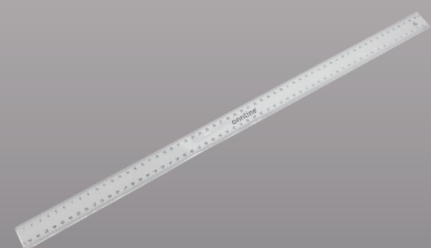
SAP Code	Size (mm)	Color
AOF390	420 x 230 x 350	blue & black



### Metric Aluminum Ruler

- High-grad lightweight anodized aluminum alloy body

SAP Code	L (mm)
AOF385	600



### 14PC Combination Wrench Set

- Chrome-Vanadium Steel
- Chrome plated, mirror polished
- Heat-treated, HRC 40~50

SAP Code	Specification
AOF368	8,9,10,11,12,13,14,15,16,17,18,19,22,24mm



### Crimping Tool Set

- Handy assortment accessories set for electrical repair
- Crimps insulated terminals
- Easily cuts and strips wire
- Cleanly shears bolts
- Comfort bi-material grip handle

SAP Code	Size	L (mm)
AOF388	8"	200



### 61 PC S2 Bit Set

- 59 PC 1" S2 bits
- 1PC 1/4" quick release adaptor

**S2**

SAP Code	Type
ANZ724	SLOT (8) 3x2, 4.5x2, 5.5x2, 6.5mmx2; PH (11) #0x2, #1x2, #2X5, #3x2; PZ (11) #0x2, #1x2, #2X5, #3x2; TORX (10) T8, 9, 10, 15, 20, 25, 27, 30, 35, 40; Torx Tamper (7) 10, 15, 20, 25, 27, 30, 40; HEX (12) 1/16, 3/32, 1/8, 5/32, 3/16, 7/32", 2, 3, 4, 5, 6, 8mm

