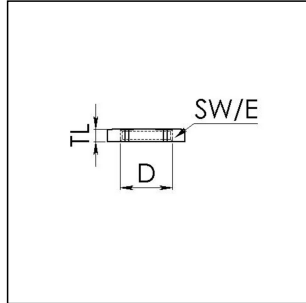


ESMU 40

Locknut, stainless steel



Product illustrations are exemplary and may differ from the chosen product. Further variants and individual customization, we will gladly provide you on request.



Material	Stainless steel 1.4305
Thread type	M
Connection thread size D	40
Lead	1,5
Key width SW	46 mm
Collar diameter (E)	50 mm
Total length TL	5 mm
WISKA-Order no.	10064193
Type	ESMU 40
Packing unit	5

19.11.2014