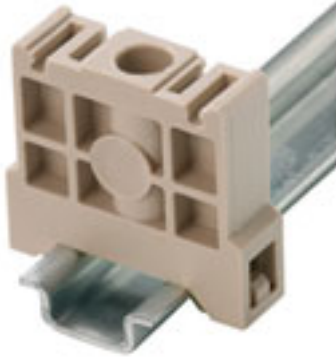


Accessories
EW 15/2

Weidmüller Interface GmbH & Co. KG
Klingenbergstraße 16
D-32758 Detmold
Germany
Fon: +49 5231 14-0
Fax: +49 5231 14-292083
www.weidmueller.com



Weidmüller's range of products includes end brackets that guarantee a permanent, reliable mounting on the terminal rail and prevent sliding. Versions with and without screws are available. The end brackets include marking options, also for group markers, and also a test plug holder.

General ordering data

Type	EW 15/2
Order No.	1071900000
Version	Accessories, End bracket
GTIN (EAN)	4008190462949
Qty.	50 pc(s).

Data sheet

Accessories EW 15/2

Weidmüller Interface GmbH & Co. KG
 Klingenbergstraße 16
 D-32758 Detmold
 Germany
 Fon: +49 5231 14-0
 Fax: +49 5231 14-292083
 www.weidmueller.com

Technical data

Dimensions and weights

Width	8 mm	Height	27 mm
Height of lowest version	27 mm	Depth	25 mm
Net weight	5.16 g		

Temperatures

Continuous operating temp., min.	-50 °C	Continuous operating temp., max.	100 °C
----------------------------------	--------	----------------------------------	--------

Additional technical data

Type of mounting	Direct mounting	Version	For the terminals
------------------	-----------------	---------	-------------------

Clampable wires (rated connection)

Blade size	0.6 x 3.5 mm
------------	--------------

Dimensions

TS 15 offset	13.5 mm
--------------	---------

Material data

Material	Plastic	Colour	Dark Beige
UL 94 flammability rating	HB		

System specifications

Product family	Accessories	Mounting rail	TS 15
----------------	-------------	---------------	-------

Classifications

ETIM 3.0	EC001041	UNSPSC	30-21-18-01
eClass 5.1	27-08-10-03	eClass 6.2	27-08-10-03
eClass 7.1	27-08-10-03		

Approvals

ROHS	Conform
------	---------

Downloads

DXF	22353_EW_15-2_DXF.dxf
STEP	1071900000_22353_EW_15-2_STP.stp