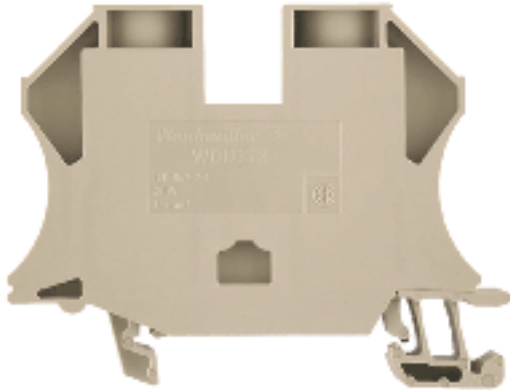


**W-Series
WDU 35N**

Weidmüller Interface GmbH & Co. KG
Klingenbergstraße 16
D-32758 Detmold
Germany
Fon: +49 5231 14-0
Fax: +49 5231 14-292083
www.weidmueller.com



The versatile and extensive range of products - from 0.05 mm² to 300 mm² - means that you have diverse options for your applications at your disposal. Hardened steel for mechanical strength and high-quality tinned copper for optimum conductivity. All materials comply with RoHS requirements and have been tested to current environment guidelines.

General ordering data

Type	WDU 35N
Order No.	1040400000
Version	W-Series, Feed-through terminal, Rated cross-section: 35 mm ² , Screw connection, Dark Beige
GTIN (EAN)	4008190351816
Qty.	20 pc(s).

W-Series
WDU 35N

Weidmüller Interface GmbH & Co. KG
 Klingenbergstraße 16
 D-32758 Detmold
 Germany
 Fon: +49 5231 14-0
 Fax: +49 5231 14-292083
 www.weidmueller.com

Technical data**Dimensions and weights**

Width	16 mm	Height	66 mm
Height of lowest version	51 mm	Depth	50.5 mm
Weight	52 g	Net weight	48.104 g

Temperatures

Continuous operating temp., min.	-50 °C	Continuous operating temp., max.	120 °C
----------------------------------	--------	----------------------------------	--------

2 clampable wires (H05V/H07V) same cross-section (rated connection)

Wire connection cross section, finely stranded, two clampable wires, min.	2.5 mm ²	Wire cross-section, finely stranded, two clampable wires, max.	6 mm ²
Wire connection cross section, finely stranded with wire-end ferrules DIN 46228/1, 2 clampable wires, min.	2.5 mm ²	Wire connection cross section, finely stranded with wire-end ferrules DIN 46228/1, 2 clampable wires, max.	6 mm ²

Additional technical data

Explosion-tested version	No	Number of similar terminals	1
Open sides	closed	Type of mounting	Snap-on
Version	Screw connection, for screwable cross-connection, closed		

CSA ratings data

Certificate No. (CSA)	12400-388	Voltage size B (CSA)	300 V
Voltage size D (CSA)	300 V	Current size B (CSA)	120 A
Current size D (CSA)	10 A	Wire cross section max. (CSA)	2 AWG
Wire cross section min. (CSA)	12 AWG		

Clampable wires (rated connection)

Type of connection	Screw connection	Stripping length	18 mm
Blade size	6.5 x 1.2 mm	Connection direction	on side
Number of connections	2	Clamping range, rated connection, min.	2.5 mm ²
Clamping range, rated connection, max.	50 mm ²	Clamping screw	M 6
Tightening torque, min.	2.5 Nm	Tightening torque, max.	5 Nm
Gauge to IEC 60947-1	B8	Wire connection cross section, solid core, min. rated connection	2.5 mm ²
Wire connection cross section, solid core max. rated connection	16 mm ²	Wire connection cross section, stranded, rated connection, min.	2.5 mm ²
Wire connection cross section, stranded, rated connection, max.	50 mm ²	Wire connection cross section, finely stranded, max.	35 mm ²
Wire connection cross-section, finely stranded, min.	2.5 mm ²	Wire connection cross section, finely stranded with wire-end ferrules DIN 46228/1, rated connection, min.	2.5 mm ²
Wire connection cross section, finely stranded with wire-end ferrules DIN 46228/1, rated connection, max.	35 mm ²	Cross-section for connected conductor, finely stranded with wire-end ferrules and plastic collars DIN 46228/4, rated connection, min.	2.5 mm ²
Wire connection cross-section, finely stranded with wire-end ferrules and plastic collars DIN 46228/4, rated connection, max.	35 mm ²	Wire connection cross section AWG, min.	AWG 12
Wire connection cross section AWG, max.	AWG 10		

Creation date June 17, 2014 10:38:58 AM CEST

Catalogue status 28.04.2014 / We reserve the right to make technical changes.

2

Data sheet

W-Series WDU 35N

Weidmüller Interface GmbH & Co. KG
 Klingenbergstraße 16
 D-32758 Detmold
 Germany
 Fon: +49 5231 14-0
 Fax: +49 5231 14-292083
 www.weidmueller.com

Technical data

Rated data

Rated cross-section	35 mm ²	Rated voltage	500 V
Rated impulse withstand voltage	6 kV	Rated current	125 A
Current at maximum wires	150 A	Standards	IEC 60947-7-1
Pollution severity	3	Surge voltage category	III

UL ratings data

Certificate No. (UR)	E60693	Voltage size C (UR)	1000 V
Current size C (UR)	150 A	Conductor size Factory wiring max. (UR)	0 AWG
Conductor size Factory wiring min. (UR)	12 AWG	Conductor size Field wiring max. (UR)	0 AWG

Material data

Material	Wemid	Colour	Dark Beige
UL 94 flammability rating	V-0		

System specifications

Product family	W-Series	Type of connection	Screw connection
Connection direction	on side	Number of levels	1
Number of connections	2	No. of clamping points per level	2
Number of potentials per level	1	Levels cross-connected internally	No
Mounting rail	TS 35	End cover plate required	No

Classifications

ETIM 3.0	EC000897	UNSPSC	30-21-18-11
eClass 5.1	27-14-11-20	eClass 6.2	27-14-11-20
eClass 7.1	27-14-11-20		

Product information

Descriptive text ordering data: 1000 VDC rated voltage tested. 1000 V UL and CSA for use groups B and C: can be used with isolating DIN rails and when using WTW-type partitions.

Approvals

Approvals



ROHS Conform

Data sheet

W-Series
WDU 35N

Weidmüller Interface GmbH & Co. KG
Klingenbergstraße 16
D-32758 Detmold
Germany
Fon: +49 5231 14-0
Fax: +49 5231 14-292083
www.weidmueller.com

Drawings

