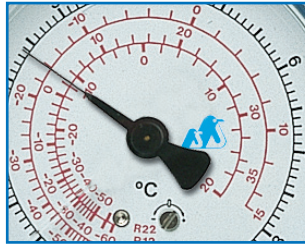




Other gauge



"ITE" pulse free gauge

"ITE"® CALIBRATABLE PRESSURE GAUGES

1. DRY PULSE-FREE GAUGES Series 820 Class 1.6 - Ø 80 mm

- All "823 & 825 SERIES" gauges are for CFC, HCFC and HFC.
- 80 mm Scale Diameter. 1/8" male NPT (= MPT) or 1/4" male flare SAE (= MFL).
- "PULSE FREE" mechanism offers a reading as stable as oil filled gauges but *WITH NO OIL*. Effective dampening of compressor pulsations on pointershaft.
- Gauges are calibratable (easy "zero positioning" needle).

TYPES FOR ORDERING

- **823 RED HIGH PRESSURE SERIES (= HP)**
From 0 bar (0 psi) to 34 bar (500 psi)
For R410A gauges from 0 bar (0 psi) to 55 bar (800 psi).
- **825 BLUE LOW PRESSURE COMPOUND SERIES (= LP)**
From -1 bar (-30 inch Hg) to 8 bar (120 psi) linear with retard up to 17 bar (250 psi)
For R410A gauges from -1 bar (-30 inch Hg) to 30 bar (440 psi).

Gauge SCALE options ordering

- Select it and Add it to the "823" or "825" gauge part number.

B	bar only	
BC	bar/°C	for R12, R22, R502
BPC	bar/psi/°C	for R12, R22, R502
BPC/410	bar/psi/°C	for R410A
BPC/410/27	bar/psi/°C	for R22, R407C, R410A
BC/4	bar/°C	for R134a, R404A
BC/447	bar/°C	for R134a, R404A, R407C, R507
BC/27	bar/°C	for R22, R407C
BC/247	bar/°C	for R22, R134a, R404A, R407C

TYPES OFFERED

823 +SCALE HP GAUGE 1/8" MPT vertical bottom connection
825 +SCALE LP GAUGE 1/8" MPT vertical bottom connection
 Example: 823-BC

823-S +SCALE HP GAUGE 1/4" MFL vertical bottom connection
825-S +SCALE LP GAUGE 1/4" MFL vertical bottom connection
 Example: 823-S-BC

823-C +SCALE HP GAUGE 1/4" MFL center back connection
825-C +SCALE LP GAUGE 1/4" MFL center back connection
 Example: 823-C-BC

823-WM +SCALE HP GAUGE 1/4" MFL vertical bottom connection
 + front ring wall mounting
825-WM +SCALE LP GAUGE 1/4" MFL vertical bottom connection
 + front ring wall mounting
 Example: 823-WM-BC

