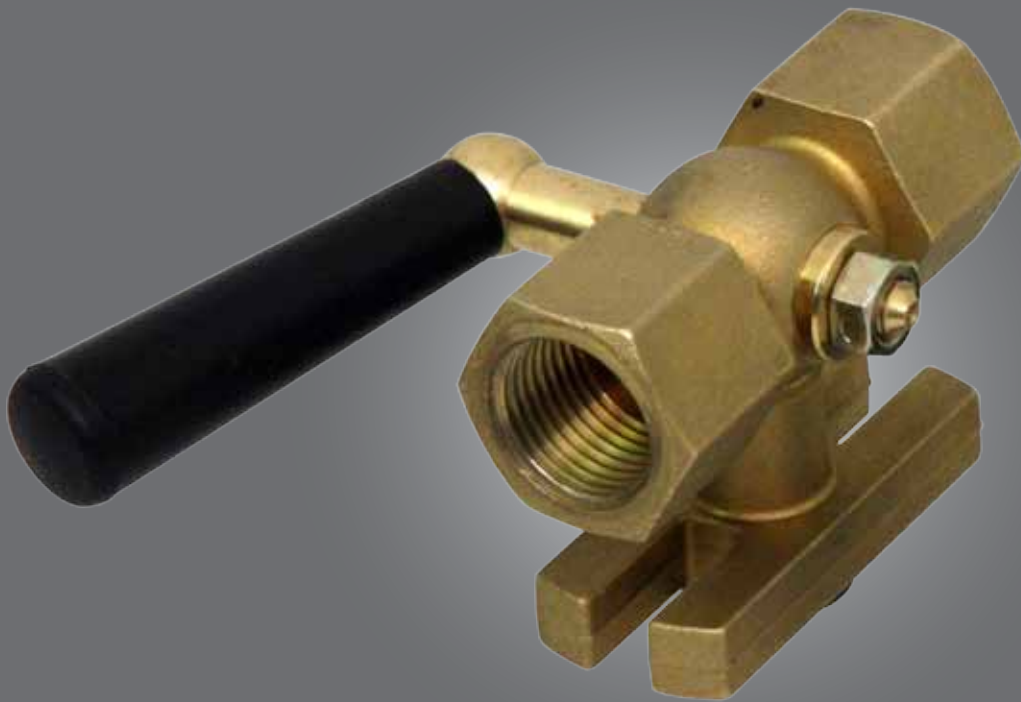


Kägel ventil | Pressure gauge cock brass | Painemittariventtiili messinki





Onnline

Range of application

For liquids, gas or steam, from - 10°C up to + 50°C
For pressure gauges with sealing washer according to DIN EN 837-1

- Plastic handle



Onnline Painemittariventtiili messinki

Range of application

For liquids, gas or steam, from - 10°C up to + 50°C
For pressure gauges with sealing washer according to DIN EN 837-1

- Plastic handle



Onnline Pressure gauge cock brass

Range of application

For liquids, gas or steam, from - 10°C up to + 50°C
For pressure gauges with sealing washer according to DIN EN 837-1

- Plastic handle

Tekniset tiedot | Tekniska data | Specifications

Koodi		Connection thread	PN	Material	Part no.	Remarks
4582004	DIN 16 261-A	G 1/2	25	Brass	S003.13.000	-
4582010		G 1/2	25	Brass	N003.36.000	with test flange 60 x 25 x 10 mm
4582020		G 1/2	25	Brass	S003.16.000	with test flange 60 x 25 x 10 mm
4582030		G 1/4	6	Brass	S003.27.000	-
4582034	DIN 16 261-B	G 1/2	25	Brass	S003.15.000	-



4582004



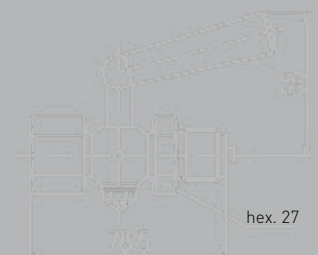
4582010



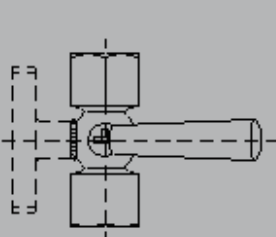
4582020



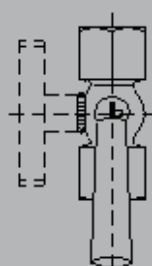
4582030



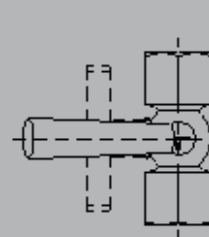
4582034



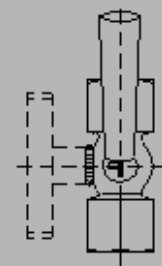
Vent



Operate



Purge



Test
(only cock with test connection)