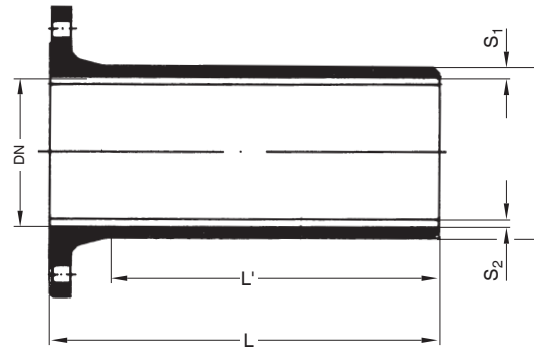
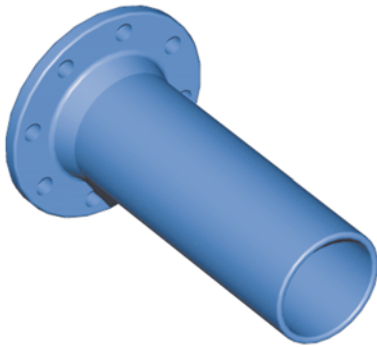


Flanged Spigots
 as per DIN EN 545,
 F-pieces,
 made of ductile cast iron (nodular cast iron)



DN	Dimensions in mm				Casting Weight in kg			
	L mm	L' mm	S ₁	S ₂	PN 10	PN 16	PN 25	PN 40
40*	400	200			6.0	6.0	6.0	6.0
50*	400	200			7.7	7.5	7.5	7.5
65*	400	200			9.5	9.5	9.5	9.5
80	350	215	7.0	4.0	7.8	7.8	7.8	7.8
100	360	215	7.2	4.0	9.7	9.7	10.2*	10.2*
125	370	220	7.5	4.0	12.5	12.5	13.0*	14.5*
150	380	225	7.8	4.0	15.8	15.8	16.8	18.8
200	400	230	8.4	4.0	22.8	22.8	24.8	30.3
250	420	240	9.0	4.0	32.8	31.8	35.8*	45.8*
300	440	250	9.6	4.0	43.2	42.7	47.7*	63.2*
350	460	260	10.8	5.0	52.3	55.3	64.3*	85.3*
400	480	270	10.2	5.0	64.3	70.3	81.3	115.3*
500	520	290	12.0	5.0	93.9	108.9	120.9*	153.9*
600	560	310	13.2	5.0	133.3	159.3	173.3	226.3
700	600	330	14.4	6.0	179.4	194.4	228.4*	
800	600	330	15.6	6.0	226.3	245.3	294.3*	
900*	600	330	16.8	6.0	272.2	295.2	356.2	
1000	600	330	18.0	6.0	328.1	369.1	447.1*	
1200*	600	330	20.4	6.0	455.9	519.9	619.9	

* upon request
 S₁ casting wall thickness
 S₂ cement mortar coat thickness

Surface protection:

- Epoxy-resin powder coating as per DIN EN 14901 / DIN 3476 with a minimum coat thickness of > 250 µm
- Cement mortar internal coating
- Internal enamelling as per DIN 3475 or all-round enamelling, resp.
- Friezink coating upon request

Note: Flanged spigots with special face-to-face lengths upon request.