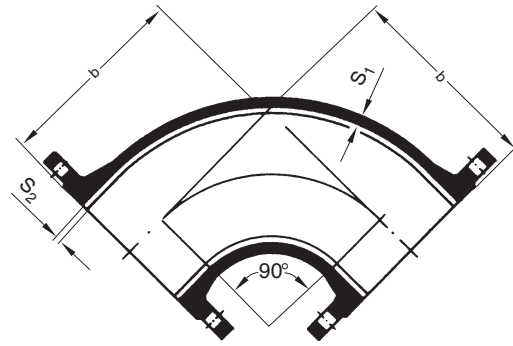
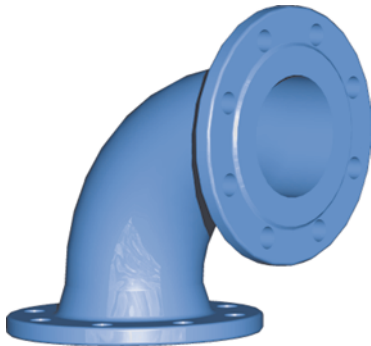


### 90° Double-Flanged Bends

as per DIN EN 545,  
90° Q-pieces,  
made of ductile cast iron (nodular cast iron)



DN	Dimensions in mm			Casting Weight in kg ≈			
	b	S <sub>1</sub>	S <sub>2</sub>	PN 10	PN 16	PN 25	PN 40
40* **	140			6.5	6.5	6.5	6.5
50* **	150			8.5	8.5	8.5	8.5
65* **	165			11.0	11.0	11.0	11.0
80	165	7.0	4.0	9.5	9.7	9.7*	9.7*
100	180	7.2	4.0	12.0	12.0	13.0*	13.0*
125	200	7.5	4.0	15.6	15.6	16.8*	19.6*
150	220	7.8	4.0	19.8	19.8	21.8*	26.3*
200	260	8.4	4.0	31.2	30.2	34.7	45.2
250	350	9.0	4.0	50.0	49.0	57.0*	77.0*
300	400	9.6	4.0	69.9	68.9	80.4*	110.9*
350*	450	10.2	5.0	89.5	96.0	112.0	155.0
400	500	10.8	5.0	114.5	125.5	148.5	215.5*
500	600	12.0	5.0	179.0	209.0	233.0*	300.0*
600	700	13.2	5.0	269.0	322.0	350.0*	455.0*
700*	800	14.4	6.0	381.5	411.5	481.5	
800	900	15.6	6.0	527.5	565.5	664.5*	
900*	1000	16.8	6.0	690.0	737.0	858.0	
1000*	1100	18.0	6.0	896.0	979.0	1135.0	
1200* **	1300	20.4	6.0	1418.0	1547.0	1746.0	

- \* upon request
- \*\* as per Works Standard
- S<sub>1</sub> casting wall thickness
- S<sub>2</sub> cement mortar coat thickness

#### Surface protection:

- Epoxy-resin powder coating as per DIN EN 14901 / DIN 3476 with a minimum coat thickness of > 250 µm
- Cement mortar internal coating
- Internal enamelling as per DIN 3475 or all-round enamelling, resp.
- Fria-zink coating upon request