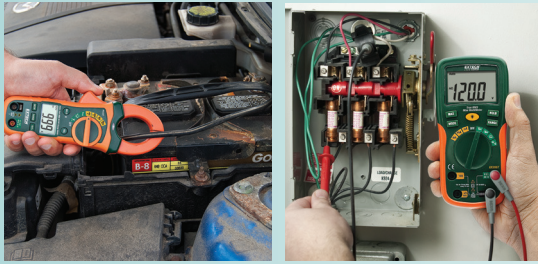


ETK35 Electrical Test Kit with TRMS AC/DC Clamp Meter



This special value Electrical Test Kit is assembled with True RMS Meters to provide all the electrical testing needs for installation and repair of electrical systems, HVAC equipment, and large appliances, plus AC/DC Clamp Meter for automotive and motor applications.



Kit Includes:

- EX205T True RMS Multimeter with Max Hold
- MA435T True RMS 400A AC/DC Clamp Meter with a built-in Non-Contact Voltage Detector with LED alert and Relative Mode
- 1.2" (30mm) jaw size for conductors up to 350MCM
- Data Hold and Auto Power Off
- Exceptional Value Kit is supplied with test leads, Type K thermocouple bead wire probe, batteries, and attractive storage case that provides protection and organization for the meters and accessories

Specifications	EX205T Range (Max Resolution)	MA435T Range (Max Resolution)
AC Voltage	600V (0.1mV) True RMS	600V (0.1mV) True RMS
DC Voltage	600V (0.1mV)	600V (0.1mV)
AC Current	10.00A (0.1µA) True RMS	400A (0.01A)
DC Current	10.00A (0.1µA)	400A (0.01A)
Resistance	20MΩ (0.1Ω)	20MΩ (0.1Ω)
Frequency	—	10kHz (0.01Hz)
Capacitance	—	100µF (0.01nF)
Temperature	—	-4 to 1400°F/-20 to 760°C (0.1°)
Continuity / Diode	Yes	Yes

Ordering

ETK35 Electrical Test Kit with True RMS AC/DC Clamp Meter

