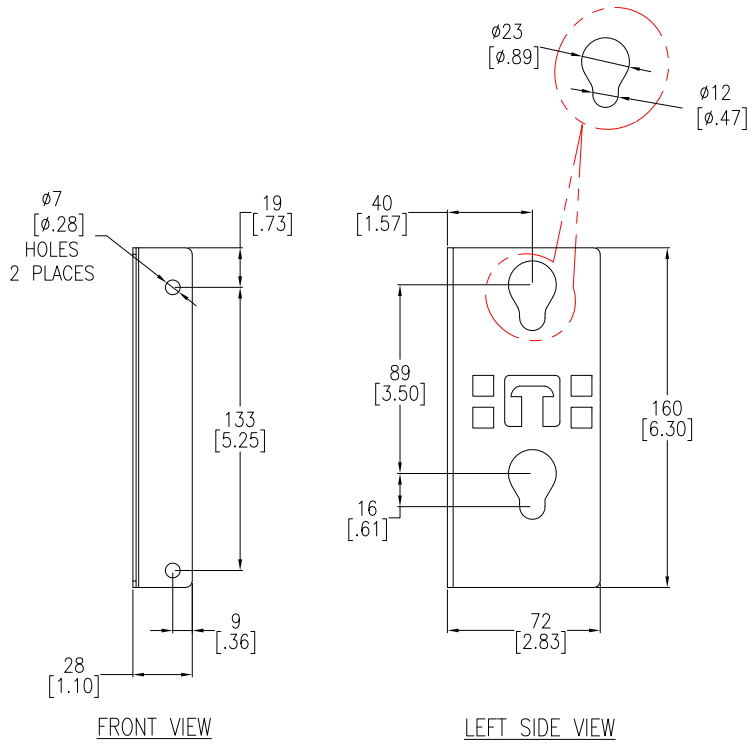
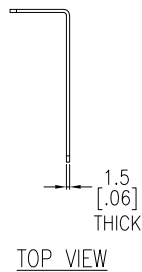
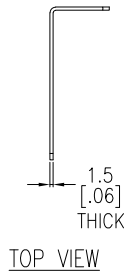
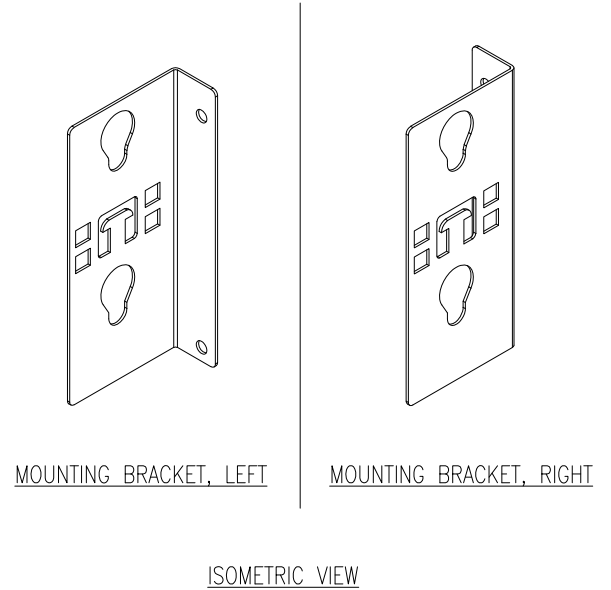
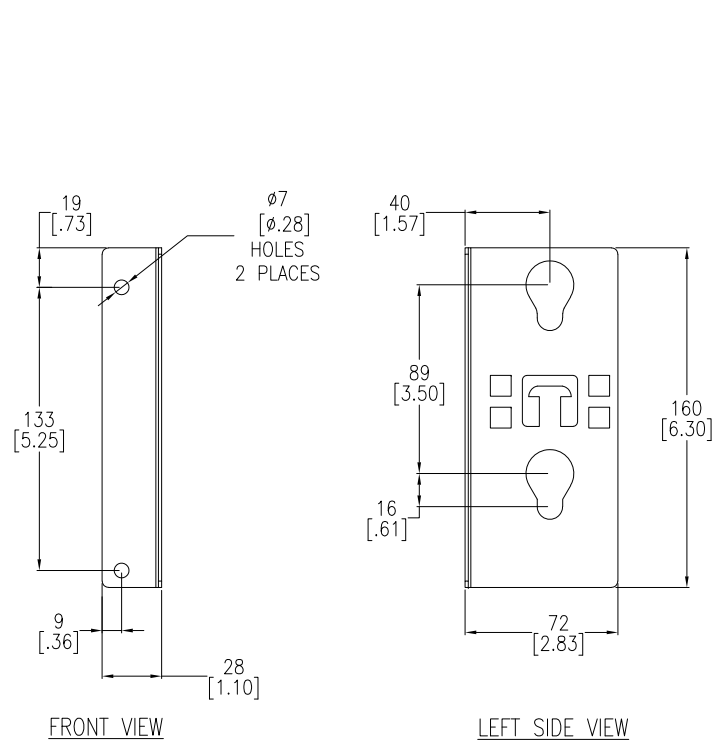


4 MOUNTING BRACKET, LEFT



4 MOUNTING BRACKET, RIGHT



NOTES:

1. INSTALLATION SHALL COMPLY WITH ALL APPLICABLE NATIONAL, STATE AND LOCAL ELECTRICAL REGULATIONS.
2. REFER TO PRODUCT DOCUMENTATION FOR ADDITIONAL DETAILS PRIOR TO INSTALLATION AND SITE PREPARATION WORK.
3. ALL DIMENSIONS ARE IN MILLIMETERS [INCHES].
4. THIS SKU CONTAINS A QUANTITY OF 2 NUMBERS OF LEFT & 2 NUMBERS OF RIGHT BRACKETS. NET WEIGHT OF THE UNIT (4 BRACKETS) IS 0.5 kg [1.1 lb].

THIS DRAWING AND SPECIFICATIONS HEREIN ARE THE PROPERTY OF SCHNEIDER ELECTRIC AND SHALL NOT BE COPIED, REPRODUCED OR USED IN WHOLE OR IN PART, AS THE BASIS FOR THE MANUFACTURE OR SALE OF ITEMS WITHOUT WRITTEN PERMISSION FROM SCHNEIDER ELECTRIC. THIS DRAWING IS BASED UPON LATEST AVAILABLE INFORMATION AND IS SUBJECT TO CHANGE WITHOUT NOTICE.



TITLE:	Easy RACK PDU MOUNTING BRACKET, LEFT & RIGHT SINGLE WIDTH GENERAL ARRANGEMENT	DWG NO:	ER7PDUBRKTS	REV:	0
DRAWN BY:	JAYAPRAKASH	DATE:	14-JAN-21	PROJECT:	FIRST ANGLE PROJECTION
ENGINEER:	Job GU	DATE:	15-JAN-21	APPROVED BY:	Job GU
PROJECT:	SUBMITTAL DRAWINGS	SHEET:	1 OF 1	DATE:	15-JAN-21