

en

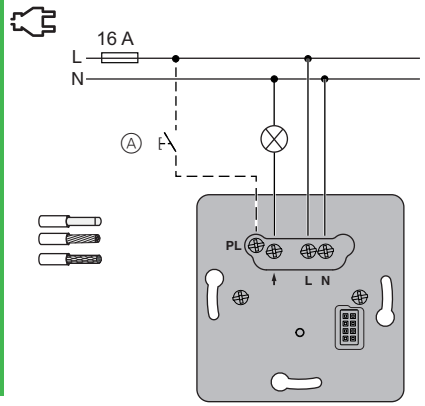
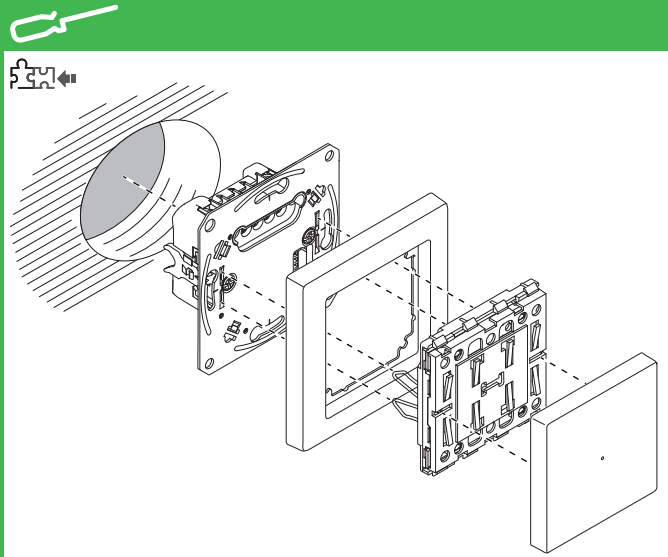


Wiser app



WDE002910

Wiser



en

Wiser relay switch

Necessary accessories

- To be completed with:
- Frame in corresponding design

Prerequisites and accessories

- A Bluetooth-capable **smartphone/tablet** (referred to below as **smartphone**) with Bluetooth 4.1 or higher is required. Operating systems: Android™ 5.1 or higher, Apple® iOS 10.3 or higher.
- Download the **Wiser app** to your smartphone. You can use the app to couple, set up and control Wiser devices.
- Home control via the Internet: Supplement your Wiser system with the **Wiser Home Touch** control unit.

Product information is available

More detailed product information is available on the Internet -> Download document



http://download.schneider-electric.com/files?p_Doc_Ref=WDE002910_HWad_d_EN

For your safety

⚠ DANGER
HAZARD OF ELECTRIC SHOCK, EXPLOSION, OR ARC FLASH

Safe electrical installation must be carried out only by skilled professionals. Skilled professionals must prove profound knowledge in the following areas:

- Connecting to installation networks
- Connecting several electrical devices
- Laying electric cables
- Safety standards, local wiring rules and regulations

Failure to follow these instructions will result in death or serious injury.

⚠ DANGER
Risk of fatal injury from electric shock.
The output may carry electrical current even when the load is switched off.

- When working on the device: Always disconnect the device from the supply by means of the fuse in the incoming circuit.

Failure to observe these instructions will lead to death or serious injuries.

Getting to know the Wiser relay switch

With the Wiser relay switch (hereinafter referred to as **relay switch**), you can switch ohmic, inductive or capacitive loads.

Control options

Room control: To actuate the relay switch within a room, it can be coupled either with your smartphone or with another Wiser device. This coupling type is a default factory setting.

Home control: You can control the Wiser devices via the Internet using Wiser Home Touch.

On-site operation: The relay switch can always be controlled directly on-site. You can also connect mechanical push-buttons.

Functions

Properties:

- Operation with extension unit (mechanical push-button)

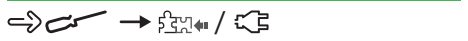
Settings:

- Reset to default settings/reset firmware

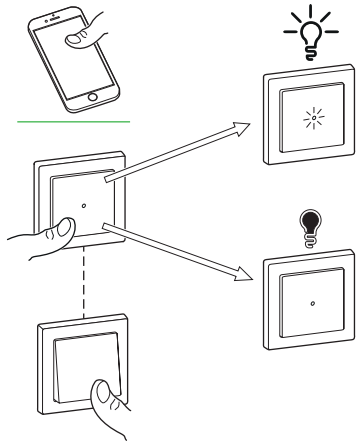
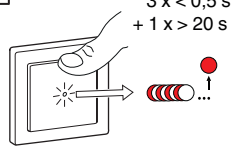
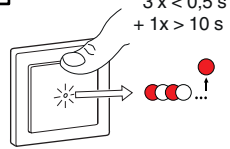
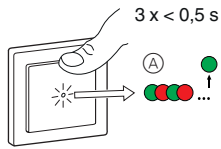
Additional app functions (factory setting: no functions active):

- Timer mode
- Time control (weekday switching, astro and random function)
- Status LED display (e.g. load on, orientation light)
- Coupling to other devices

Mounting the relay switch



- Ⓐ Mechanical push-button at extension unit connection (optional)



LED 100 W

2200 W

100 W



2000 W



1050 VA

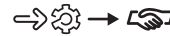
C 10 A, 140 μ F

500 VA

(M) 1000 W

Setting the relay switch

Coupling the relay switch



(A) Status LED (red/green)

Room control:

Relay switch \leftrightarrow smartphone

Select the function to add new devices in the Wiser app. Follow the instructions in the Wiser app.



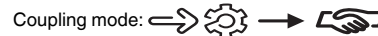
Please note:

- You can couple a maximum of 15 smartphones with the relay switch.
- Keep both devices within Bluetooth range of one another during coupling.
- Coupling mode is active for 30 s.

Room control:

Controlling Wiser device \leftrightarrow Wiser device

First set the controlling Wiser device and then the Wiser device to be controlled into coupling mode.



Coupling takes place automatically.



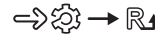
You can couple a maximum of 10 Wiser devices with each other.

Home control:

Relay switch \leftrightarrow smartphone

-> See product information

Resetting to default settings



All configuration data, user data and network data are deleted.

All settings are then set to default settings (see functions).

Resetting to Bluetooth



The device is reset to the default settings and to Bluetooth.

Operating the relay switch



Switch the load on and off with the relay switch or extension unit.

What should I do if there is a problem?

Connected load does not switch on:

- Check the power supply.
- Switch the relay switch off and back on again.
- Check the load.
- In the case of an external push-button, check the wiring.
- Re-couple coupled Wiser devices.

Technical data

Nominal voltage: AC 220/230 V ~, 50/60 Hz

Nominal power:

Neutral conductor: required

Connecting terminals: Screw terminals for max. 2 x 2.5 mm² 0.5 Nm

Extension unit: Single push-button, max. 100 m

Fuse protection: 16 A circuit breaker

Nominal current: 10 AX, cos ϕ = 0.6

Frequency band: 2.4 GHz

Transmission capacity: 2.5 mW

Fuse protection

Only use the following circuit breakers:

Schneider Electric	16 A	A9F03116
ABB	16 A	S201-B16
ABL	16 A	B16S1
Hager	16 A	MBN116
Legrand	16 A	404084
Siemens	16 A	5SL6116-6



Dispose of the device separately from household waste at an official collection point. Professional recycling protects people and the environment against potential negative effects.

Trademarks

- Apple® and App Store® are brand names or registered trademarks of Apple Inc.
- Google Play™ Store and Android™ are brand names or registered trademarks of Google Inc.

Other brands and registered trademarks are the property of the relevant owners.

EU Declaration of conformity

Hereby, Schneider Electric Industries, declares that this product is in compliance with the essential requirements and other relevant provisions of RADIO EQUIPMENT DIRECTIVE 2014/53/EU. Declaration of conformity can be downloaded on: schneider-electric.com/docs.

Schneider Electric Industries SAS

If you have technical questions, please contact the Customer Care Centre in your country.

schneider-electric.com/contact