

Light is OSRAM

OSRAM**Product data sheet: ELEMENT 90/220-240/24****Constant Voltage LED Power Supply 24V**

The reliable choice for the decorative lighting, compact size and well tested by Osram quality standards, fits all flex applications in retails, hotel, restaurants and industries.

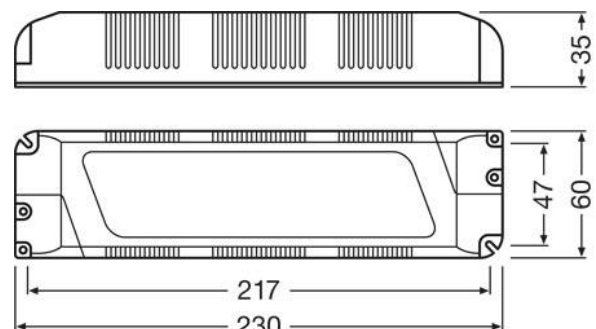
Benefits

Compatible with OSRAM Flex;
High efficiency up to 87%
Class II design for wide applications
Excellent price/quality/watt ratio

Applications

Hospitality – decorative lighting night light
Restaurants – decorative lighting
Shops – decorative lighting, shelf lighting
Residential – cove lighting, under cabinet lighting

Approval marks (Under preparation if not shown on label)



Housing material: plastic, grey

L: 230mm
L1: 217mm
W: 60mm
W1: 47mm
H: 35mm
H1: 12mm
R: 1.75mm

Product Features

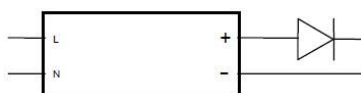
- 24V constant output voltage
- SELV
- Output power up to 90W
- Mains voltage 220-240V
- High efficiency up to 87%
- 50`000 h lifetime at $t_c = 75^{\circ}\text{C}$
- Overload protection
- Over temperature protection
- Short circuit protection
- Wide ta range: $-20 \dots +50^{\circ}\text{C}$
- Case temperature up to 85°C

Electrical Specifications

	Item	Value	Unit	Remarks
Input	Nominal Voltage	220 - 240	V _{AC}	
	Nominal frequency	50 - 60	Hz	
	AC voltage range	198 – 264	V _{AC}	
	Nominal current	0.55	A	
	Total Harmonic Distortion (THD)	< 20	%	Full load, 220-240V, 50Hz
	Power factor	> 0.9		Load from 50W to 90W at 220-240V, 50Hz
	Efficiency	87	%	Full load, 220-240V, 50Hz
	Protection class	II		
	Inrush current	< 43	A pk	Max, th = 1.9 ms μ s
	Max. units per circuit breaker	B16: 20; B10:12		I max = 43.2 A
Touch current	< 0.7	mA		
Output	Nominal voltage range	24	V _{DC}	
	Minimum voltage	23.3	V _{DC}	
	Maximum voltage	25	V _{DC}	
	Voltage ripple (typical)	< 5	%	peak-to-peak
	Nominal power range	50 – 90	W	
	Maximum power	90	W	
	Galvanic isolation	SELV		
Environment	Ambient temperature range t _a	-20...+50	°C	
	Maximum case temperature t _c	85	°C	Measured on t _c point indicated of the product label
	Max. Case temp. in fault condition	110	°C	
	Storage temperature range	-20...+80	°C	Cool down before operating
	Relative humidity	5...95	%	Not condensing
	Surge transient protection	1	kV	L/N
	Environmental rating	Indoor		
	IP rating	IP 20		
	Mains switching cycles	> 50'000		10 sec on, 10 sec off
	Expected lifetime	30'000 50'000	hrs	t _c = 85°C t _c = 75°C

Protections

- **Output short circuit protection:** short circuit current is limited to approx. 3.75 A without damage to the unit and for unlimited time. Be sure the load is designed to withstand the short circuit current as well.
- **Output overload protection:** the unit is intrinsically protected against over loading because the output current is limited.
- **Over temperature protection:** the unit is protected against temporary overheating by shut down the unit; the protection is automatically reversible, without mains switchover.



Wiring Diagram

“H03VVH2-F 2x0.75mm²” cable is recommended. For other cable up to 1.5mm², please make sure cable fulfill IEC 60598-1 clause 5.2 requirement and installed by professional electrician.

Ordering information

Product name	EAN10	EAN40	Pieces / box
ELEMENT 90/220-240/24	4052899463813	4052899463820	20

OSRAM GmbH

Head Office:

Marcel-Breuer-Strasse 6
80807 Munich, Germany
Phone +49 89 6213-0
www.osram.com

OSRAM