

100 Nr
Indoor
Hub kort

200 Nr
(Expansion card)

300 Nr Outdoor
unit

Fuse 10A

Motor protection
comp.

Soft start komp.

Startsignal
Comp.

Emc filter

Fan 230V

4-way
valve

Compressor

Compressor
Heater

Driptray
Heater

Self regulation heat cable
Protection of freezing in wastewater
length switched as needed
Danfoss has not this cable for sale

bk
bn
gy
bl
wh
rd

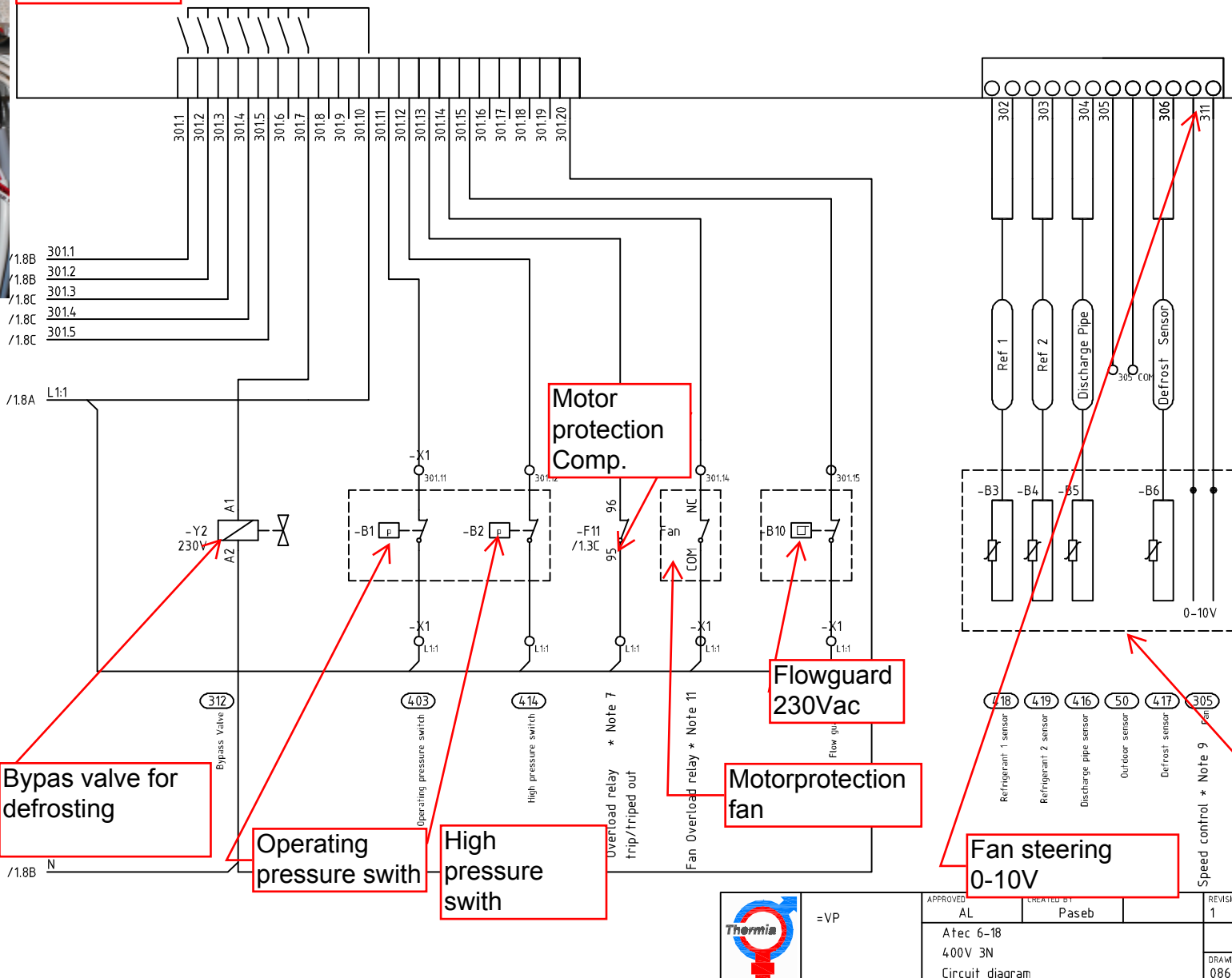
* Note 2

REVISION 1	DATE 110609
	CONTINUED 2
DRAWING NR. 086U9242	SHEET 1



-E1 (452)
Vp card
outdoor unit

Art.number
086U9239



Bypass valve for defrosting

Operating pressure switch

High pressure switch

Motor protection Comp.

Flowguard 230Vac

Motorprotection fan

Fan steering 0-10V

Sensor 1 cooling circuit
Starts defrosting and control fan in heat mode

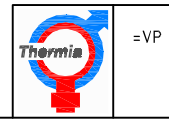
Sensor 2 cooling circuit
Stop defrosting and control fan in cooling mode

Defrosting starts when the different between sensor 1 and defrost sensor is too large.

Note !
The return temperature must be above 20°C otherwise no defrosting.

50= Out door sensor
305= 0-10V Fan
416= pressure pipe sensor
417= defrost sensor
418= cooling circuit sensor 1
419= cooling circuit sensor 2

D
E
F
bk
bn
gy
bl
wh
rd
* Note 2



APPROVED	AL	CREATED BY	Paseb	REVISION	1
Atec 6-18				DRAWING	
400V 3N				086U9242	
Circuit diagram				2	

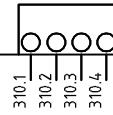
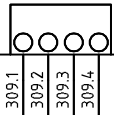
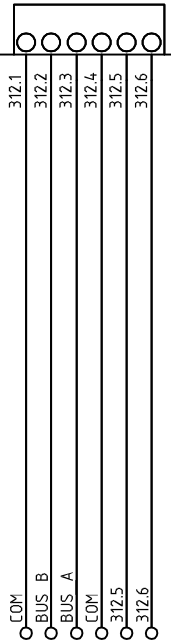
1 2 3 4 5 6 7 8

A
B
C
D
E
F

-E1 (452)
Vp card
outdoor unit



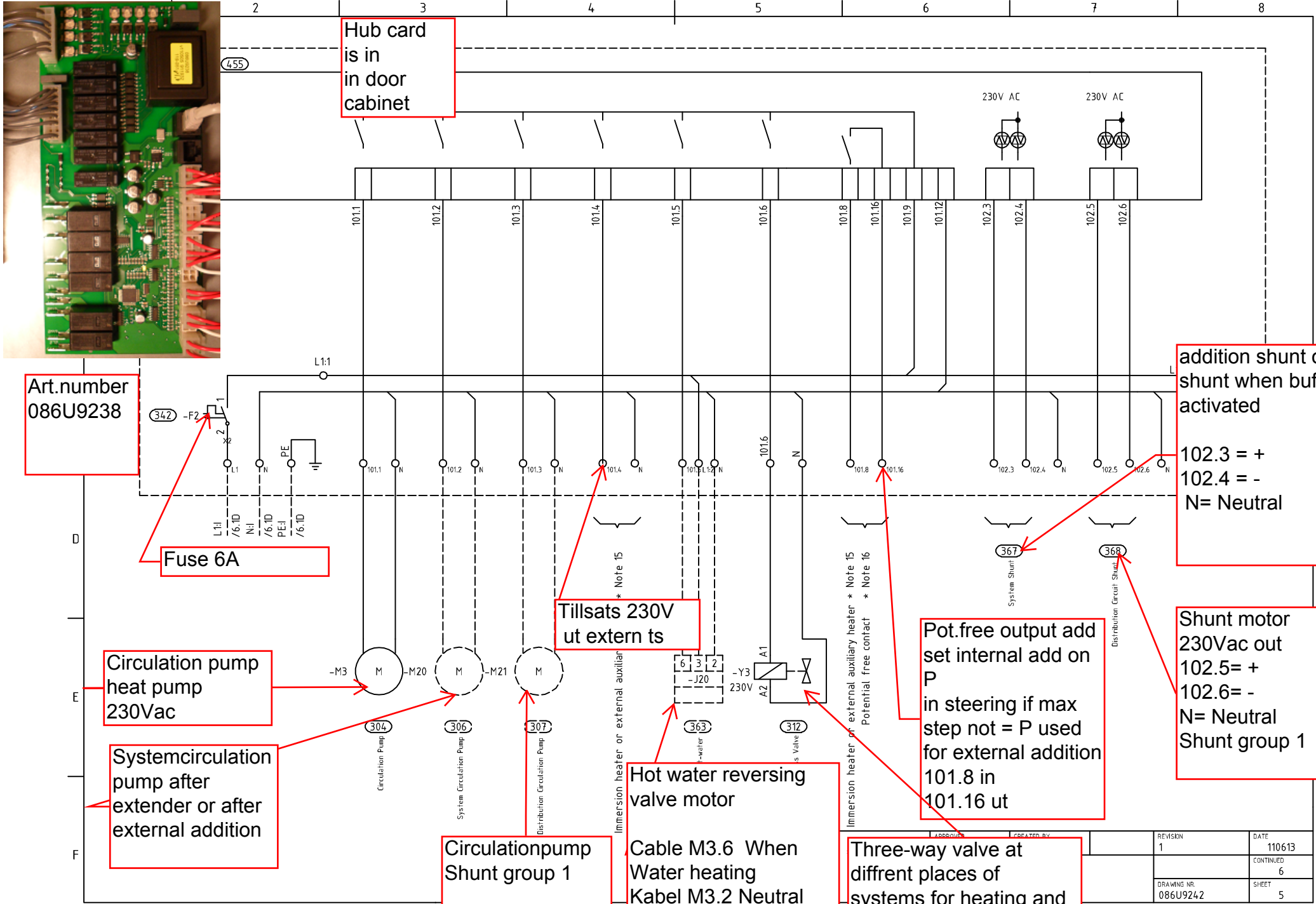
Art.number
086U9239



bk
bn
gy
bl
wh
rd } * Note 2



=VP	APPROVED AL	CREATED BY Paseb	REVISION 1	DATE 110613
	Atec 6-18 400V 3N			CONTINUED 4
	Circuit diagram		DRAWING NR. 086U9242	SHEET 3



Hub card is in in door cabinet

Art.number 086U9238

Fuse 6A

Circulation pump heat pump 230Vac

Systemcirculation pump after extender or after external addition

Circulationpump Shunt group 1

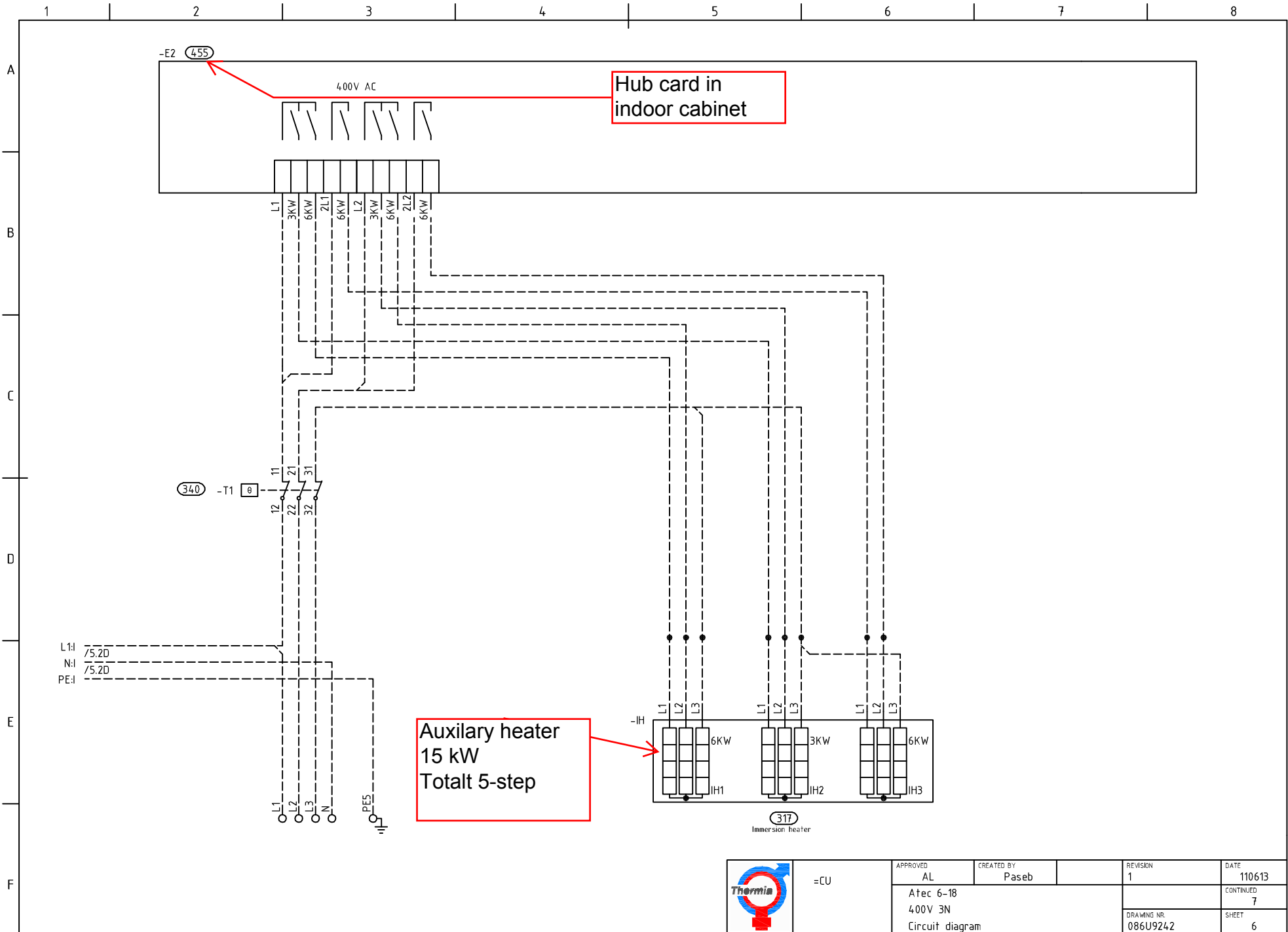
Hot water reversing valve motor
Cable M3.6 When Water heating
Kabel M3.2 Neutral
Kabel M3.3 phase


Three-way valve at different places of systems for heating and cooling

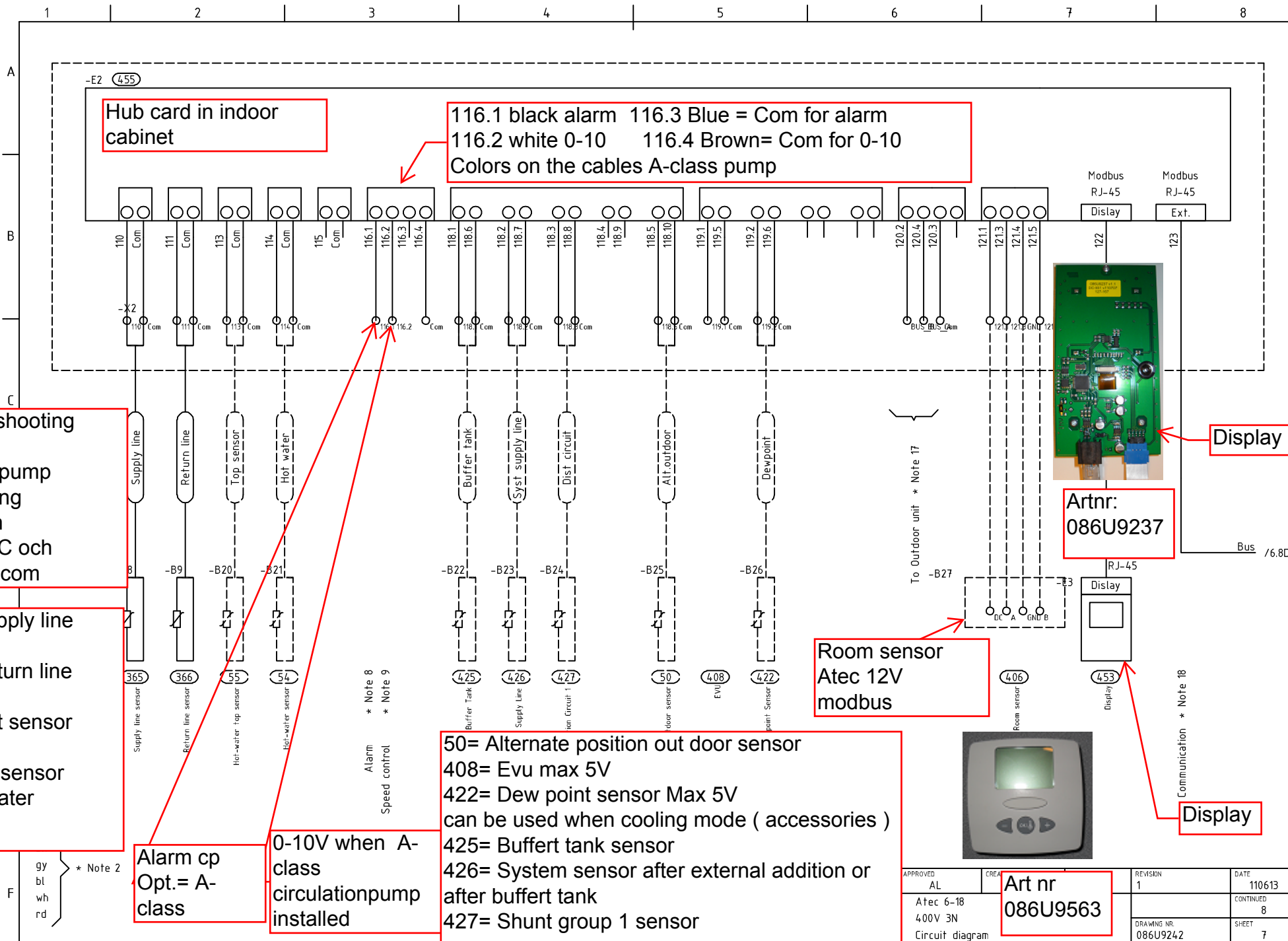
addition shunt or system shunt when buffettank is activated
102.3 = +
102.4 = -
N= Neutral

Shunt motor 230Vac out
102.5= +
102.6= -
N= Neutral
Shunt group 1

REVISION 1	DATE 110613
	CONTINUED 6
DRAWING NR 086U9242	SHEET 5



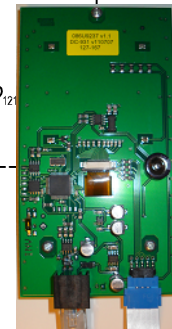
	=CU	APPROVED AL	CREATED BY Paseb	REVISION 1	DATE 110613
		Atec 6-18 400V 3N			CONTINUED 7
		Circuit diagram		DRAWING NR. 086U9242	SHEET 6



Hub card in indoor cabinet

116.1 black alarm 116.3 Blue = Com for alarm
 116.2 white 0-10 116.4 Brown= Com for 0-10
 Colors on the cables A-class pump

Modbus RJ-45 Display
 Modbus RJ-45 Ext.



Display

Artnr: 086U9237

Bus /6.80

Room sensor Atec 12V modbus



Display

50= Alternate position out door sensor
 408= Evu max 5V
 422= Dew point sensor Max 5V
 can be used when cooling mode (accessories)
 425= Buffert tank sensor
 426= System sensor after external addition or after buffert tank
 427= Shunt group 1 sensor

Troubleshooting 0-10V A-class pump measuring between 116.2 DC och 116.4 = com

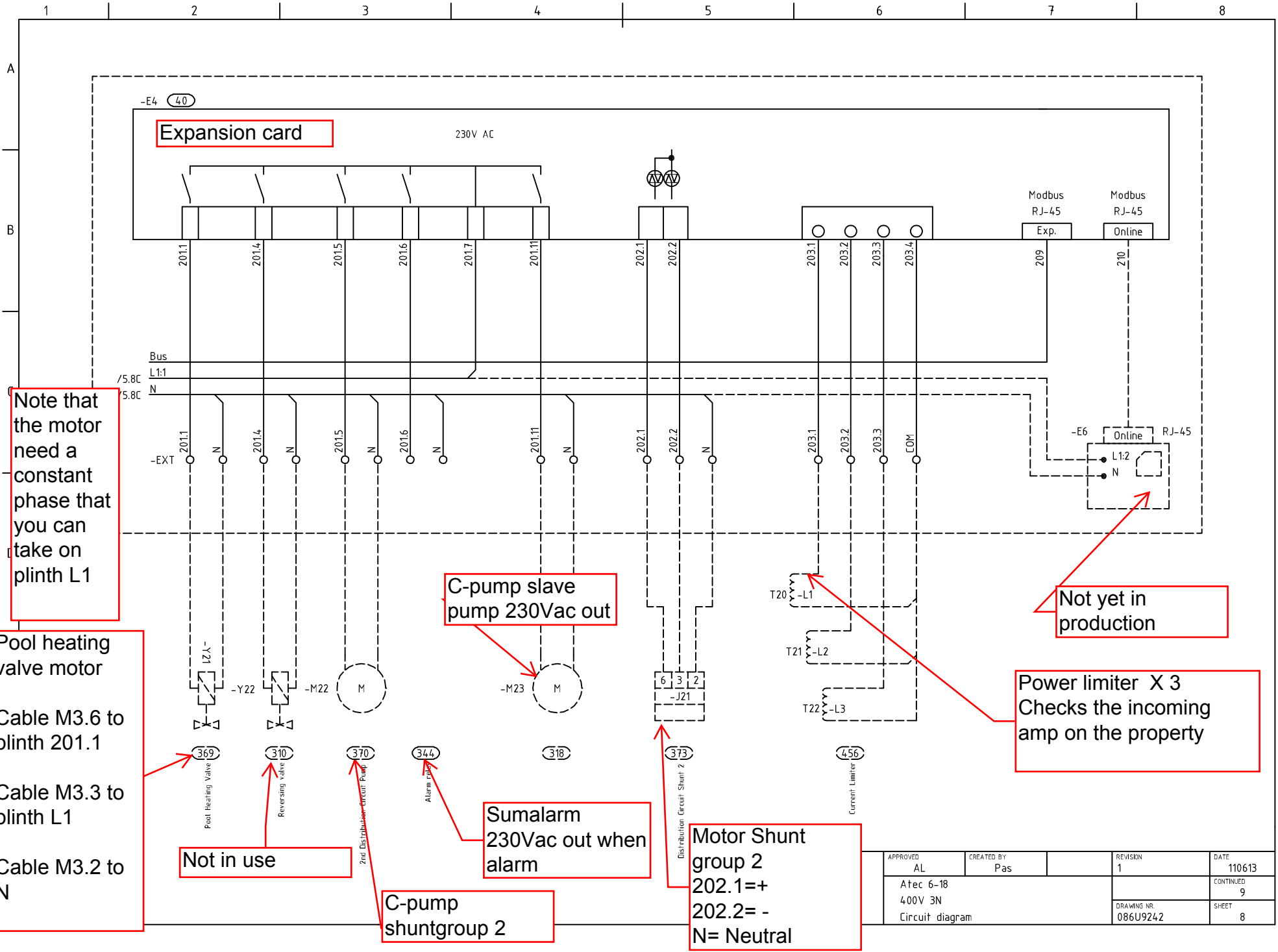
365= Supply line sensor
 366= Return line sensor
 54= Start sensor hotwater
 55= Top sensor water heater

Alarm cp Opt.= A-class

0-10V when A-class circulationpump installed

9Y } * Note 2
 bl
 wh
 rd

APPROVED AL	CREA	Art nr 086U9563	REVISION 1	DATE 110613
Atec 6-18 400V 3N				CONTINUED 8
Circuit diagram			DRAWING NR 086U9242	SHEET 7



Note that the motor need a constant phase that you can take on plinth L1

Pool heating valve motor
 Cable M3.6 to plinth 201.1
 Cable M3.3 to plinth L1
 Cable M3.2 to N

Not in use

C-pump slave pump 230Vac out

Sumalarm 230Vac out when alarm

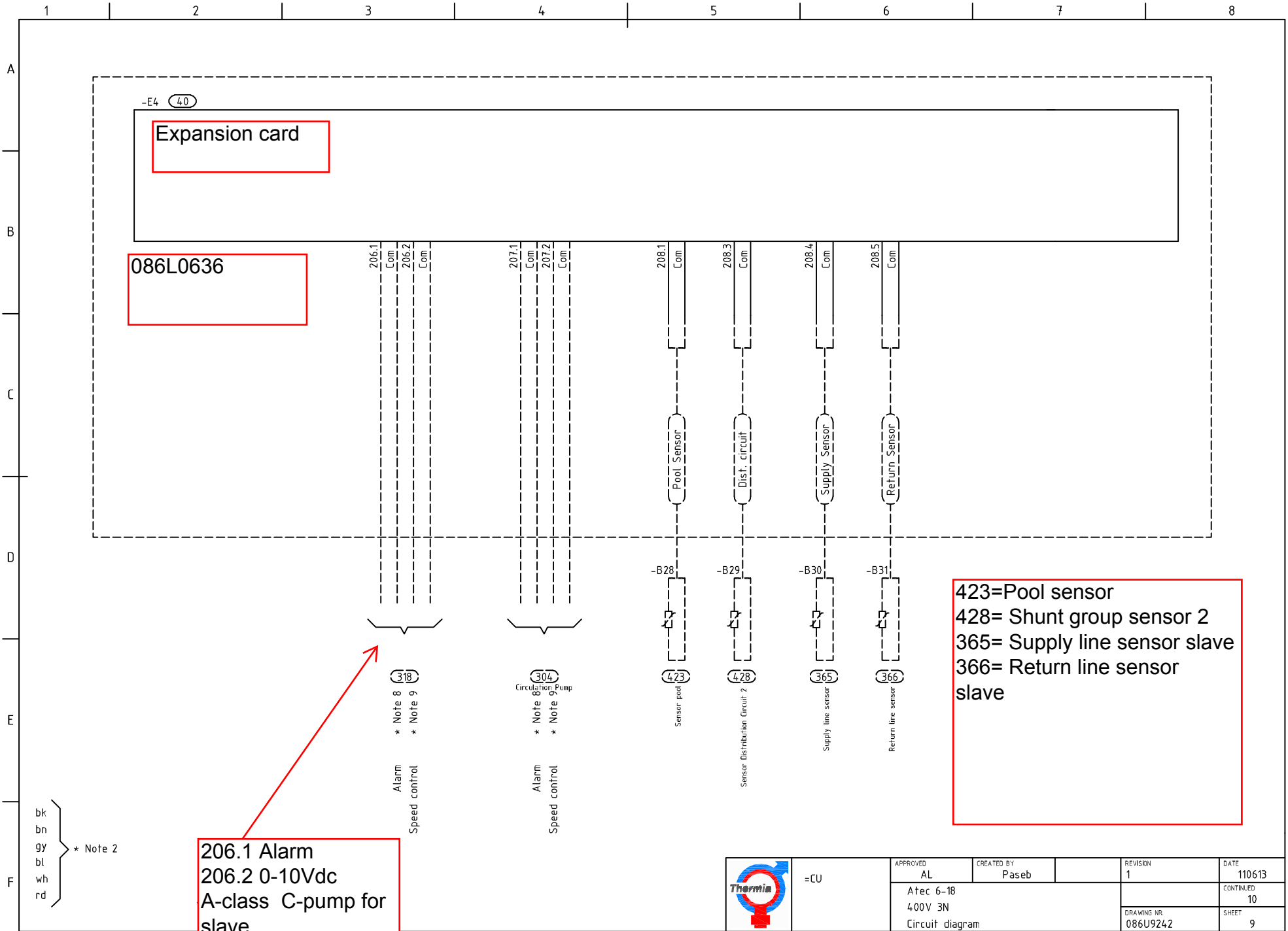
C-pump shuntgroup 2

Motor Shunt group 2
 202.1=+
 202.2=-
 N= Neutral

Not yet in production

Power limiter X3
 Checks the incoming amp on the property

APPROVED AL	CREATED BY Pas	REVISION 1	DATE 110613
Atec 6-18 400V 3N Circuit diagram		DRAWING NR 086U9242	CONTINUED 9 SHEET 8




-E4 (40)
Expansion card

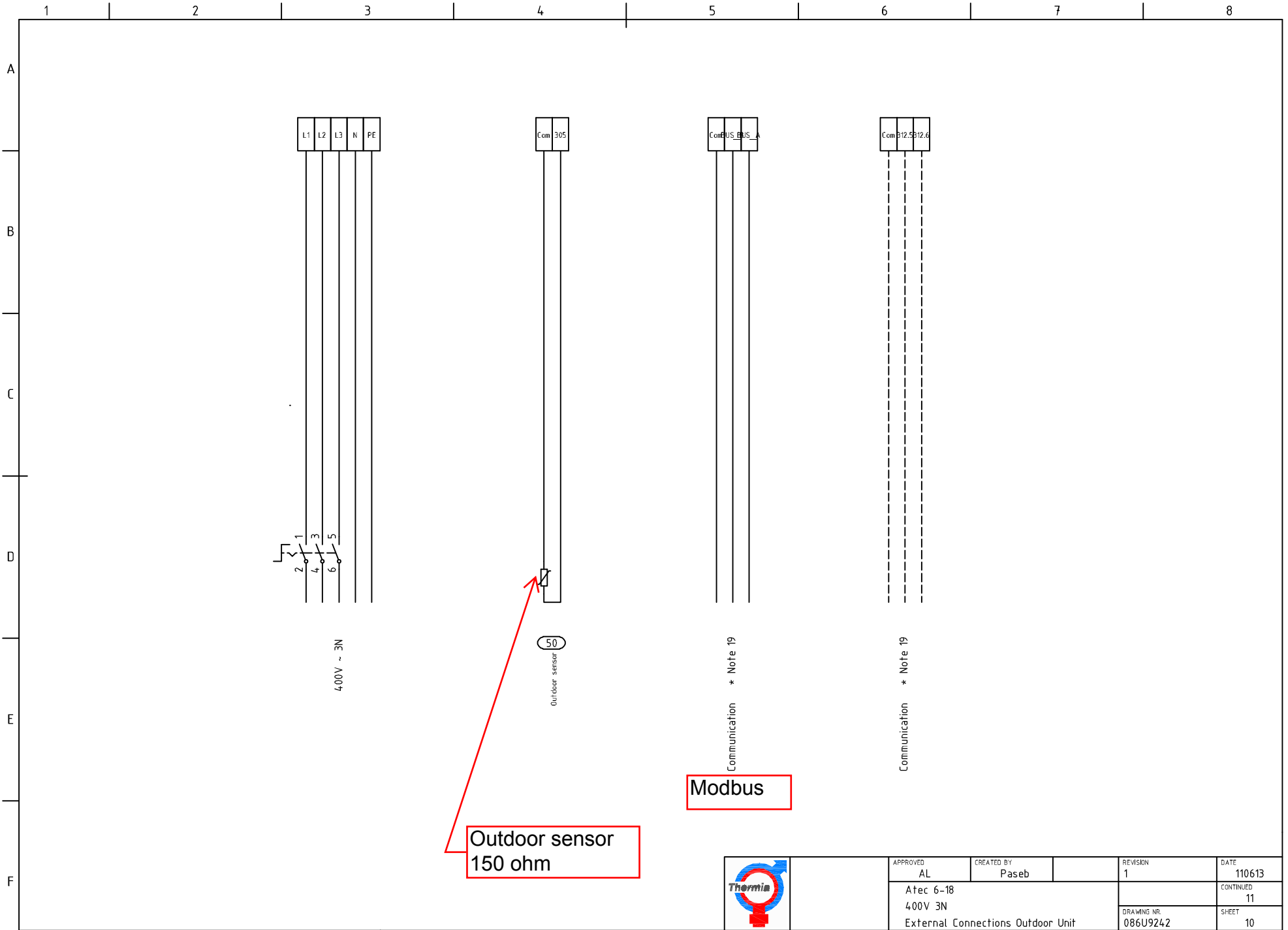
086L0636

423=Pool sensor
428= Shunt group sensor 2
365= Supply line sensor slave
366= Return line sensor slave

206.1 Alarm
206.2 0-10Vdc
A-class C-pump for slave

bk }
bn }
gy }
bl } * Note 2
wh }
rd }

	=CU	APPROVED AL	CREATED BY Paseb	REVISION 1	DATE 110613
		Atec 6-18 400V 3N Circuit diagram			CONTINUED 10
				DRAWING NR 086U9242	SHEET 9



APPROVED
AL

CREATED BY
Paseb

REVISION
1

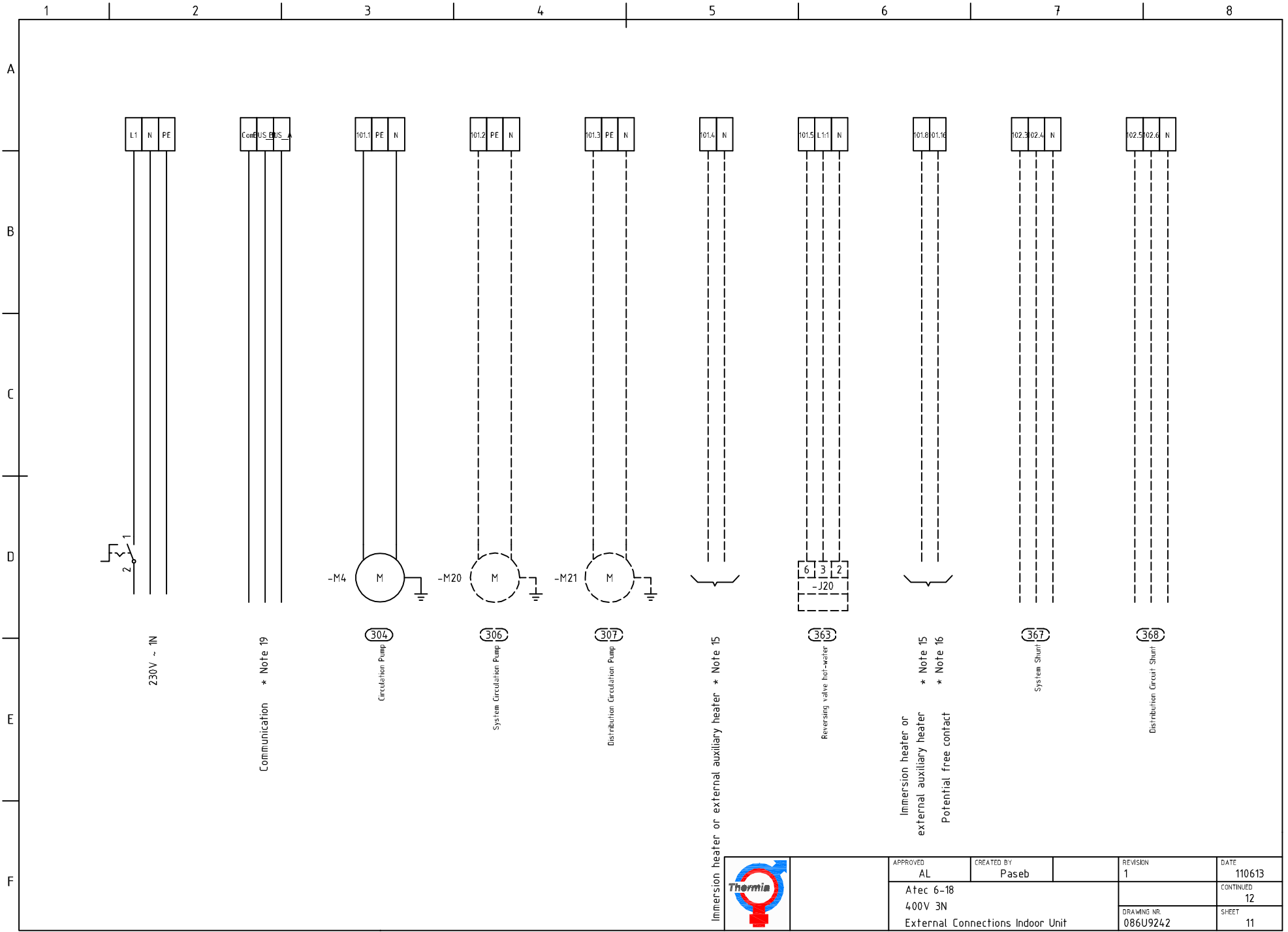
DATE
110613

CONTINUED
11

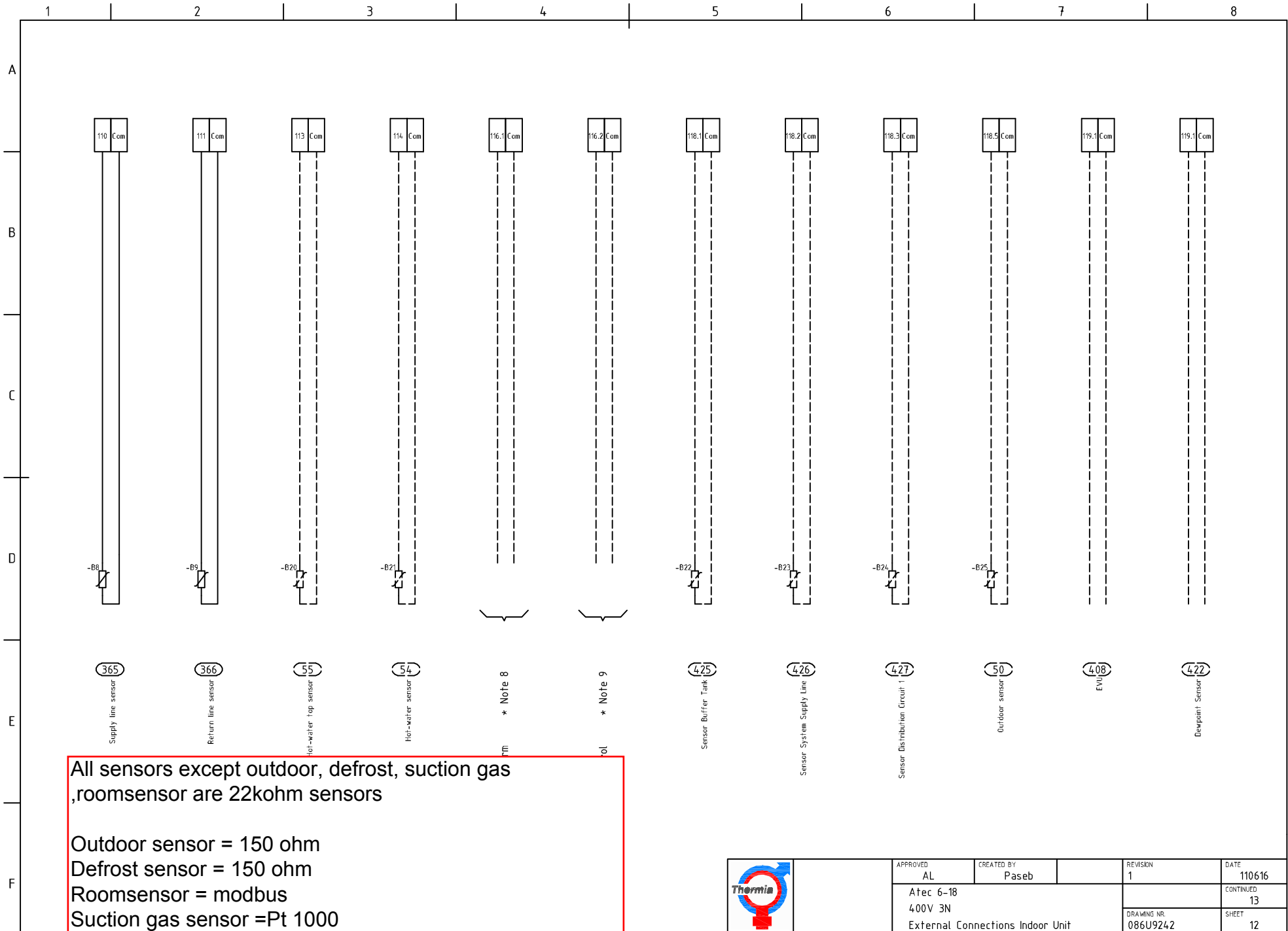
DRAWING NR.
086U9242

SHEET
10

Atec 6-18
400V 3N
External Connections Outdoor Unit




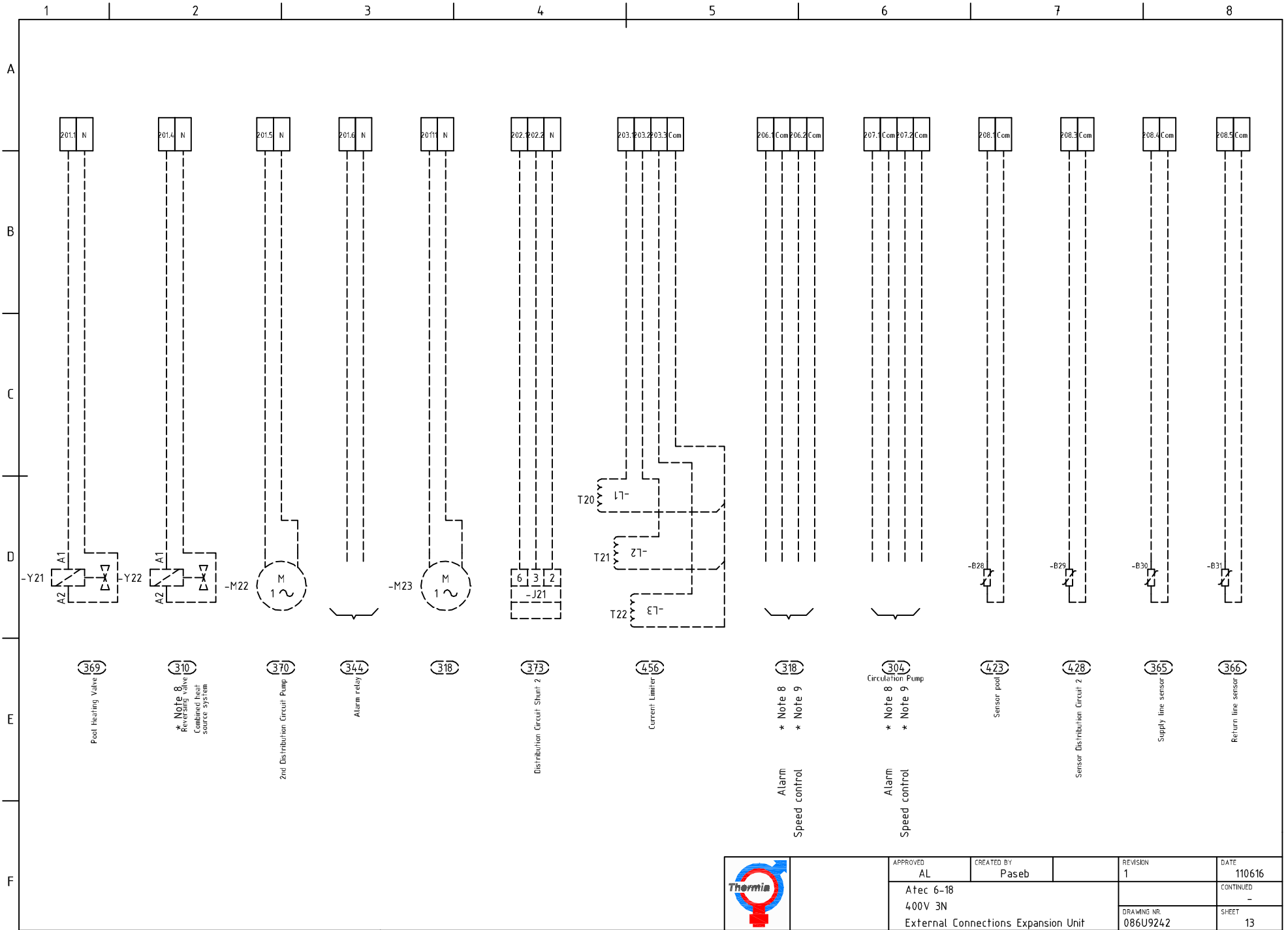
APPROVED AL	CREATED BY Paseb	REVISION 1	DATE 110613
Atec 6-18 400V 3N		DRAWING NR. 086U9242	CONTINUED 12
External Connections Indoor Unit		SHEET 11	




All sensors except outdoor, defrost, suction gas ,roomsensor are 22kohm sensors

Outdoor sensor = 150 ohm
 Defrost sensor = 150 ohm
 Roomsensor = modbus
 Suction gas sensor =Pt 1000

	APPROVED	CREATED BY	REVISION	DATE
	AL	Paseb	1	110616
	Atec 6-18 400V 3N External Connections Indoor Unit			CONTINUED
			DRAWING NR.	SHEET
			086U9242	12



	APPROVED AL	CREATED BY Paseb	REVISION 1	DATE 110616
	Atec 6-18 400V 3N			CONTINUED -
	External Connections Expansion Unit		DRAWING NR. 086U9242	SHEET 13