

Test Report

Report No. SCL01H108601003

Page 1 of 6

Applicant SHENZHEN JDD TECH NEW MATERIAL CO., LTD
Address BUILDING 2, E ZONE, MINZHU WESTERN INDUSTRIAL AREA, SHAJING TOWN, BAOAN DISTRICT, SHENZHEN CITY, GUANGDONG PROVINCE, CHINA(NO. 71, SHASONG ROAD, HOUTING COMMUNITY, SHAJING STREET, BAOAN DISTRICT, SHENZHEN CITY, GUANGDONG PROVINCE, CHINA)

The following sample(s) and sample information was/were submitted and identified by/on the behalf of the client

Sample Name Velcro braided wrap
Supplier JDD
Sample Received Date Dec. 17, 2015
Testing Period Dec. 17, 2015 to Dec. 22, 2015

Test Requested As specified by client, to test Lead (Pb), Cadmium (Cd), Mercury (Hg), Hexavalent Chromium(Cr(VI)), Polybrominated Biphenyl(PBBs), Polybrominated Diphenyl Ethers(PBDEs), Phthalates(DBP, BBP, DEHP, DIBP) in the submitted sample(s).

Test Method Please refer to the following page(s).

Test Result(s) Please refer to the following page(s).

Juan Wang

Tori Xia
Reviewed by _____

Danny Liu

Date _____
Dec. 22, 2015

Danny Liu
Technical Manager

No. R179751988

Centre Testing International Group Co., Ltd. Hongwei Industrial Zone, Bao'an 70 District, Shenzhen, Guangdong, China

Test Report

Report No. SCL01H108601003

Page 2 of 6

Test Method

Test Item(s)	Test Method	Measured Equipment(s)
Lead (Pb)	IEC 62321-5:2013 Ed.1.0	ICP-OES
Cadmium (Cd)	IEC 62321-5:2013 Ed.1.0	ICP-OES
Mercury (Hg)	IEC 62321-4:2013 Ed.1.0	ICP-OES
Hexavalent Chromium(Cr(VI))	IEC 62321:2008 Ed.1 Annex C	UV-Vis
Polybrominated Biphenyl(PBBs)	IEC 62321:2008 Ed.1 Annex A	GC-MS
Polybrominated Diphenyl Ethers(PBDEs)	IEC 62321:2008 Ed.1 Annex A	GC-MS
Phthalates(DBP, BBP, DEHP, DIBP)	Refer to EN 14372:2004(E)	GC-MS

Test Result(s)

Tested Item(s)	Result	MDL
Lead (Pb)	N.D.	2 mg/kg
Cadmium (Cd)	N.D.	2 mg/kg
Mercury (Hg)	N.D.	2 mg/kg
Hexavalent Chromium (Cr(VI))	N.D.	2 mg/kg

Tested Item(s)	Result	MDL
Polybrominated Biphenyl(PBBs)		
Monobromobiphenyl	N.D.	5 mg/kg
Dibromobiphenyl	N.D.	5 mg/kg
Tribromobiphenyl	N.D.	5 mg/kg
Tetrabromobiphenyl	N.D.	5 mg/kg
Pentabromobiphenyl	N.D.	5 mg/kg
Hexabromobiphenyl	N.D.	5 mg/kg
Heptabromobiphenyl	N.D.	5 mg/kg
Octabromobiphenyl	N.D.	5 mg/kg
Nonabromobiphenyl	N.D.	5 mg/kg
Decabromobiphenyl	N.D.	5 mg/kg

Test Report

Report No. SCL01H108601003

Page 3 of 6

Tested Item(s)	Result	MDL
Polybrominated Diphenyl Ethers(PBDEs)		
Monobromodiphenyl ether	N.D.	5 mg/kg
Dibromodiphenyl ether	N.D.	5 mg/kg
Tribromodiphenyl ether	N.D.	5 mg/kg
Tetrabromodiphenyl ether	N.D.	5 mg/kg
Pentabromodiphenyl ether	N.D.	5 mg/kg
Hexabromodiphenyl ether	N.D.	5 mg/kg
Heptabromodiphenyl ether	N.D.	5 mg/kg
Octabromodiphenyl ether	N.D.	5 mg/kg
Nonabromodiphenyl ether	N.D.	5 mg/kg
Decabromodiphenyl ether	N.D.	5 mg/kg
Tested Item(s)	Result	MDL
Phthalates		
Dibutyl phthalate(DBP) CAS#:84-74-2	N.D.	50 mg/kg
Butylbenzyl phthalate(BBP) CAS#:85-68-7	N.D.	50 mg/kg
Di-2-ethylhexyl phthalate(DEHP) CAS#:117-81-7	N.D.	50 mg/kg
Diisobutyl phthalate(DIBP) CAS#:84-69-5	N.D.	50 mg/kg

Tested Sample/Part Description Mixed test, black velcro and black plastic

Remark:

- The sample(s) had been dissolved totally tested for Lead, Cadmium, Mercury.
- As specified by client, the test was conducted by mixing several samples together. The result(s) shown on this report may be different from the content of any homogeneous material.
- MDL = Method Detection Limit
- N.D. = Not Detected (<MDL)
- mg/kg = ppm = parts per million

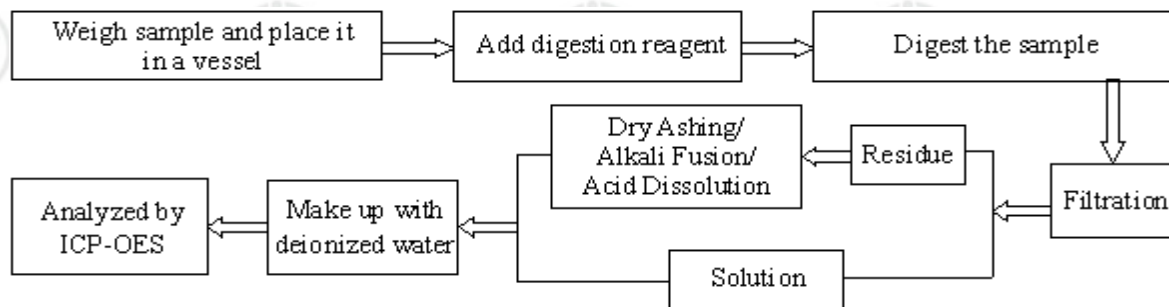
Test Report

Report No. SCL01H108601003

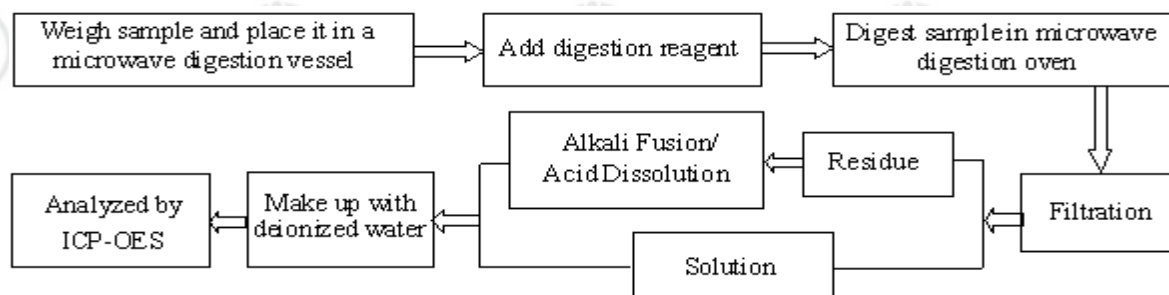
Page 4 of 6

Test Process

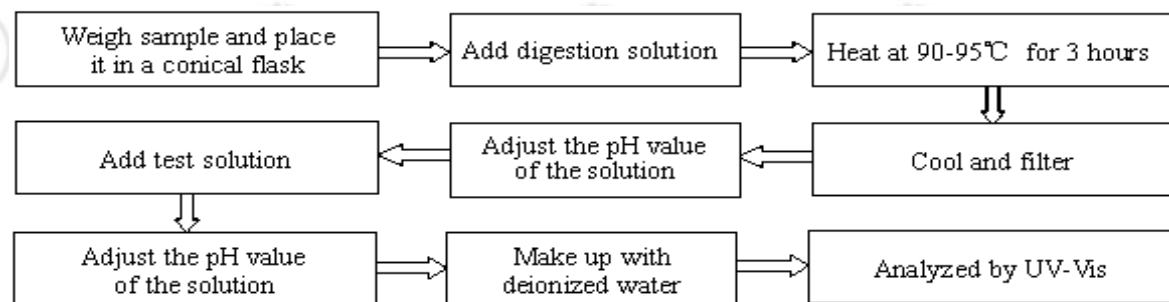
1. Lead (Pb), Cadmium (Cd)



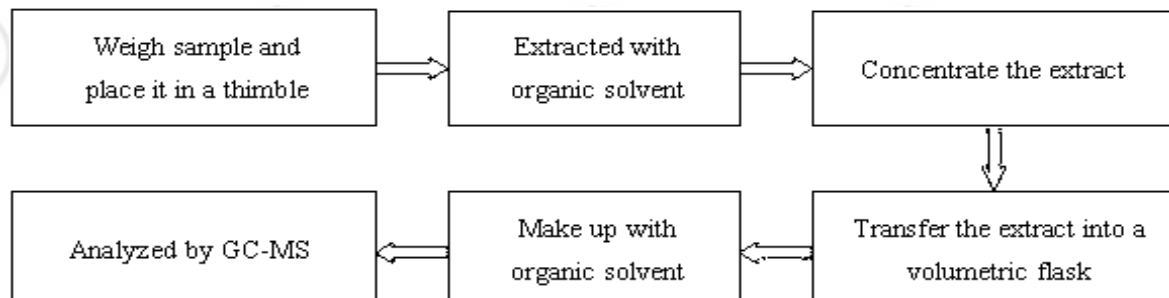
2. Mercury (Hg)



3. Hexavalent Chromium(Cr(VI))



4. Phthalates(DBP, BBP, DEHP, DIBP)

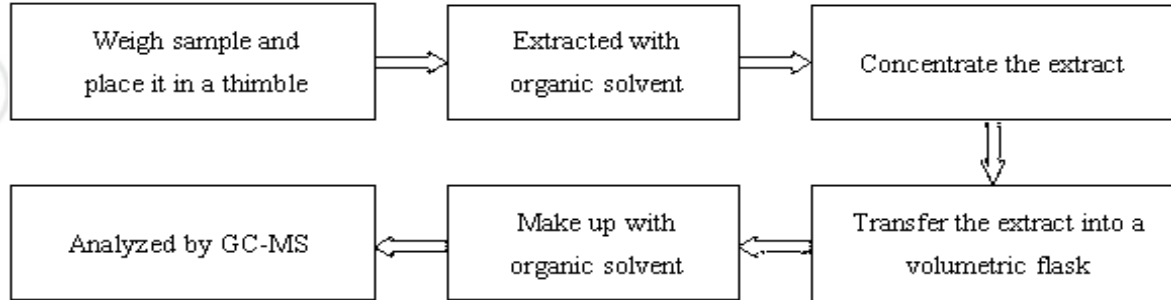


Test Report

Report No. SCL01H108601003

Page 5 of 6

5. Polybrominated Biphenyl(PBBs) , Polybrominated Diphenyl Ethers(PBDEs)

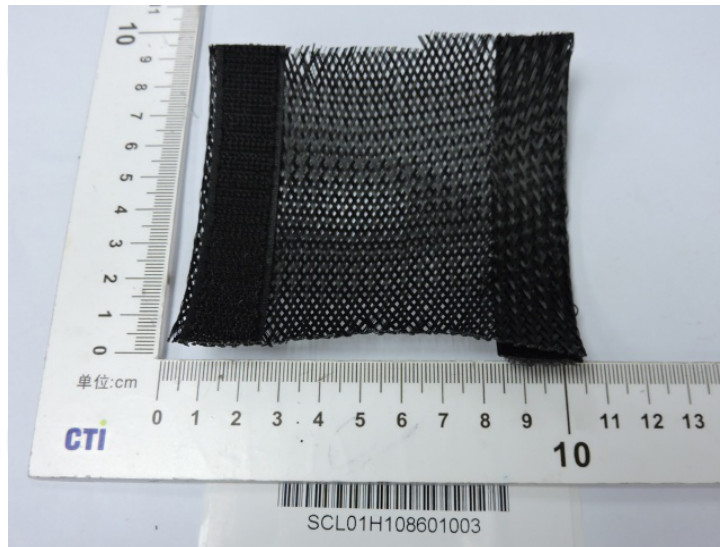


Test Report

Report No. SCL01H108601003

Page 6 of 6

Photo(s) of the sample(s)



*** End of report ***

The test report is effective only with both signature and specialized stamp. The result(s) shown in this report refer only to the sample(s) tested. Without written approval of CTI, this report can't be reproduced except in full.