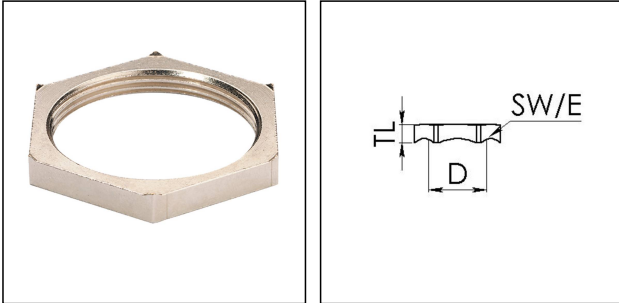


## EMMU-EMV 12

EMC-locknut, brass nickel-plated, M12



Products may differ in size, colour and appearance to those shown. If you require further information or customisation, please contact us directly.



<b>Material</b>	Brass nickel-plated
<b>Temp. range min</b>	-250 °C
<b>Temp. range max</b>	500 °C
<b>Thread type</b>	M
<b>Ø Connection thread D</b>	12
<b>Lead</b>	1,5
<b>Key width SW</b>	15 mm
<b>Collar diameter (E)</b>	17 mm
<b>Total length TL</b>	4,7 mm
<b>Surface</b>	Nickel-plated
<b>Order no. nickel-plated</b>	10063210
<b>Type</b>	EMMU-EMV 12
<b>Packing unit</b>	100
<b>ETIM-Classification</b>	EC000940

16.12.2020

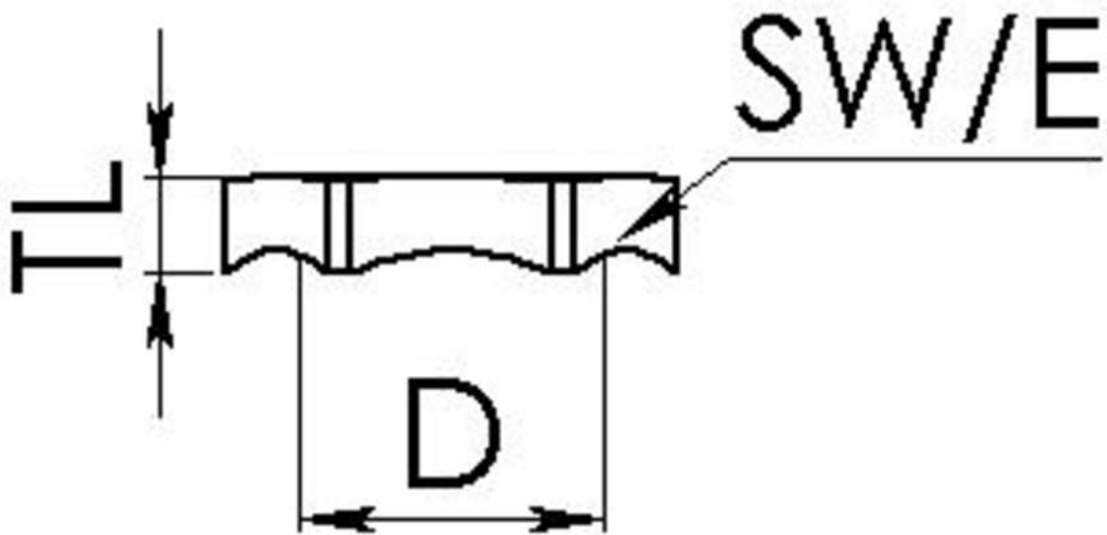
Your Contact:

**WISKA Hoppmann GmbH**

Kisdorfer Weg 28 · 24568 Kaltenkirchen · Germany

☎ +49-4191-508-0 · 📠 +49-4191-508-209

contact@wiska.de · www.wiska.com



Your Contact:

**WISKA Hoppmann GmbH**

Kisdorfer Weg 28 · 24568 Kaltenkirchen · Germany

☎ +49-4191-508-0 · 📠 +49-4191-508-209

contact@wiska.de · www.wiska.com