



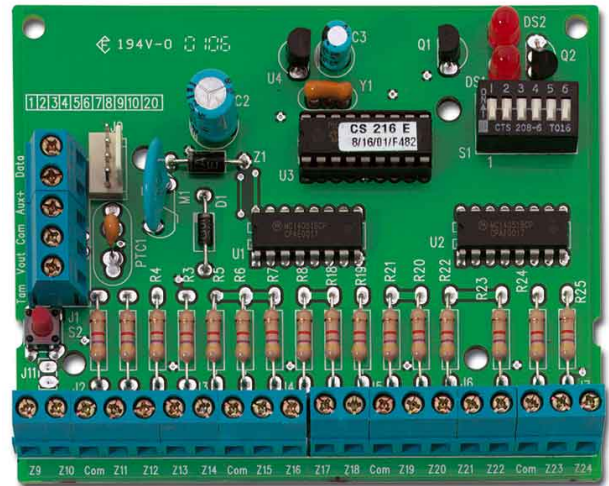
## Product Data Sheet

# CS208

## Input Expander 8 Zones

### CS208

The CS208 is a microprocessor-controlled 8-zones input expander for the CSX75 control panels allowing hardware expansions (It cannot be used in combination with CS175 and CS275). It can be mounted inside the panel housing or in the multi purpose empty housing DHX75AC. It has an optional tamper switch and power isolator.



### Standard Features

- 8 zone expander module
- Additional optional tamper switch capability
- Power isolation
- Remote location or inside panel housing installation

# CS208

## Input Expander 8 Zones

### Specifications

---

### Ordering Information

Part No.	Description
CS208	Input Expander 8 zones
CS216	Input Expander 16 zones
DHX75AC	Empty Housing - Multi-purpose
ATS1643	Steel housing for ATS1211 and ATS1221 input expanders. Steel housing for CS208/CS216 input expander & CS507 output expander on CSX75 range.
ATS1647	ATS Large plastic housing for input expanders and small DGP's

