



TrueForce LED Industrial and Retail (Highbay – MH)

TrueForce LED HPI UN 140W E40 840 WB

Philips TrueForce LED Industrial and Retail (Highbay – MH) lamps give you a quick and easy payback solution to replace HID lamps in Highbay applications. The solution gives you the LED benefits of energy-efficiency and long-lifetime, plus they come for a low initial investment. Lamp design enables directly retrofitting of HID lamps with TrueForce LED lamps without changing the fixtures or gear. The lamp is compatible with both 250W and 400W gears maximizing feasibility of such retrofits. Ignitor smart logic eliminates ignitor failure and continued ignition which may generate overheat and EMI risks. Multiple beam angle options and high color rendering index enhance the lighting distribution while creating a comfortable, safe and highly productivity environment.

Product data

| General Information | | Correlated Color Temperature (Nom) | |
|------------------------|---------------------|---------------------------------------|-------------|
| Cap-Base | E40 [E40] | Correlated Color Temperature (Nom) | 4000 K |
| EU RoHS compliant | Yes | Luminous Efficacy (rated) (Nom) | 142.00 lm/W |
| Nominal Lifetime (Nom) | 50000 h | Color Consistency | <6 |
| Switching Cycle | 50000X | Color Rendering Index (Nom) | 80 |
| Technical Type | 140-400W | LLMF At End Of Nominal Lifetime (Nom) | 70 % |
| Light Technical | | Operating and Electrical | |
| Color Code | 840 [CCT of 4000K] | Input Frequency | 50 Hz |
| Beam Angle (Nom) | 120 ° | Power (Nom) | 140 W |
| Luminous Flux (Nom) | 20000 lm | Lamp Current (Nom) | 700 mA |
| Color Designation | Cool White (CW) | Wattage Equivalent | 400 W |
| | | Starting Time (Nom) | 0.5 s |

TrueForce LED Industrial and Retail (Highbay – MH)

| | |
|---------------------------------|-----------|
| Warm Up Time to 60% Light (Nom) | 1 s |
| Power Factor (Nom) | 0.9 |
| Voltage (Nom) | 220-240 V |

Temperature

| | |
|----------------------|-------|
| T-Case Maximum (Nom) | 84 °C |
|----------------------|-------|

Controls and Dimming

| | |
|----------|----|
| Dimmable | No |
|----------|----|

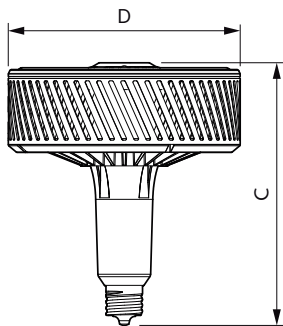
Approval and Application

| | |
|-------------------------------|---------|
| Energy Efficiency Label (EEL) | A++ |
| Energy Consumption kWh/1000 h | 140 kWh |

Product Data

| | |
|---------------------------------|--------------------------------------|
| Full product code | 871869975373300 |
| Order product name | TrueForce LED HPI UN 140W E40 840 WB |
| EAN/UPC - Product | 8718699753733 |
| Order code | 929002351002 |
| Numerator - Quantity Per Pack | 1 |
| Numerator - Packs per outer box | 3 |
| Material Nr. (12NC) | 929002351002 |
| Net Weight (Piece) | 1.250 kg |

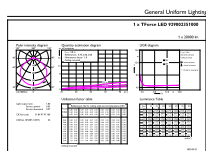
Dimensional drawing



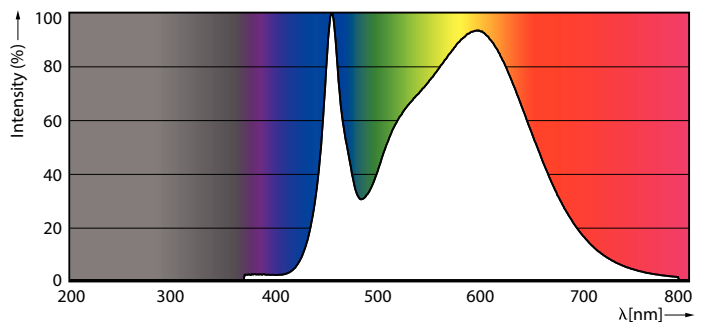
TForce HB UNI ND 200-143W E40 840 WB

| Product | D | C |
|--------------------------------------|--------|--------|
| TrueForce LED HPI UN 140W E40 840 WB | 250 mm | 290 mm |

Photometric data



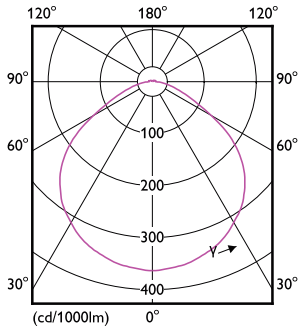
LEDTrueForce HPI 140W Others E40 840 120D



LEDTrueForce HPI 140W Others E40 840 1

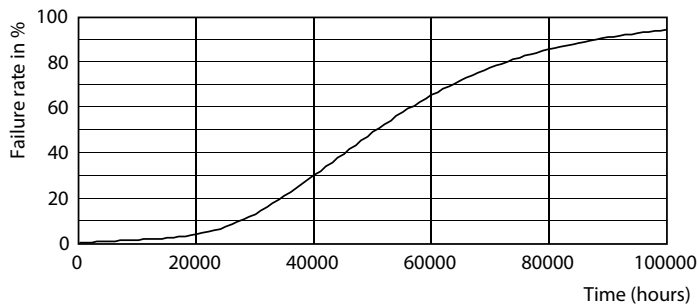
TrueForce LED Industrial and Retail (Highbay – MH)

Photometric data

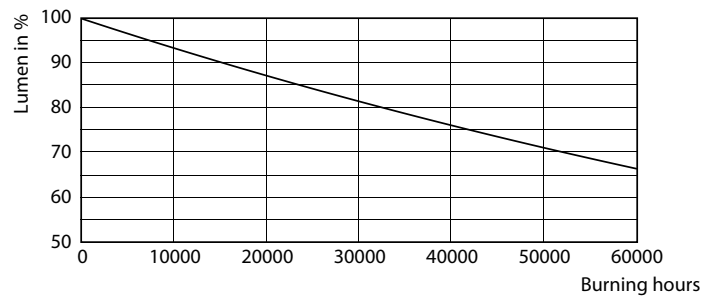


LEDTForce HPI 140W Others E40 120D

Lifetime



50K



50K

