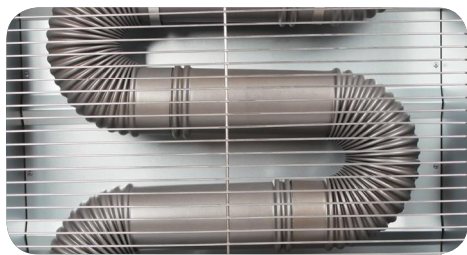


## ◆ Detailed explanation



### Wider combustion tube

20% cost saving on fuel consumption and increased far infrared radiation thanks to special coating.



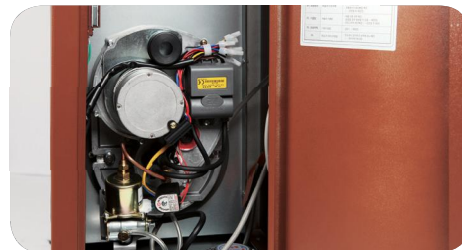
### Intuitive LED buttons

User-friendly LED display is adopted



### Odor removal filter

Smell from oil is minimized through recovery system when the unit is not operated



### Safety system

Safer to use by adopting 12 safety technologies

27,700  
BTU



35,600~  
43,600 BTU



51,500~  
59,400 BTU



67,400~  
79,300 BTU



Model Name Description	WHO-070	WHO-095	WHO-115	WHO-135	WHO-155	WHO-175	WHO-205
Type of fuel	Kerosene / Diesel						
Fuel consumption(ℓ /h)	0.72	1.0	1.1	1.4	1.52	1.77	1.9
Heating capacity (BTU)	27,700	35,700	43,600	51,500	59,500	67,400	79,300
Heating area (m <sup>2</sup> )	46.4~60.3	59.6~77.5	72.9~94.7	86.1~111.9	99.3~129.1	112.6~146.4	132.5~172.3
Power supply	AC 220V/240V 50Hz						
Power consumption (W) (Running)	40	40	40	40	40	60	60
Oil tank capacity (ℓ )	24	30	30	45	45	45	45
Weight	39kg	40kg		58kg		63kg	
Dimension (W×D×H)mm	770×320×870	973 X 320 X 979		1305 X 320 X 988		1305 X 320 X 1158	

※ Specifications can be changed without prior notice for product improvement