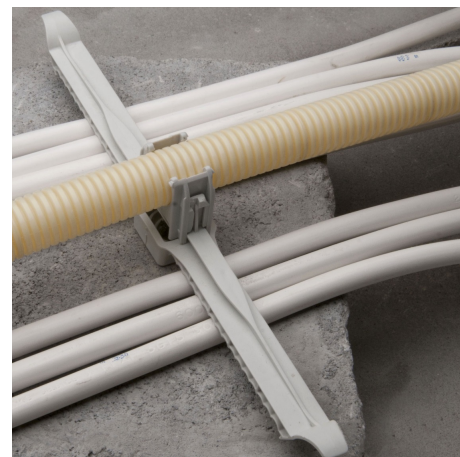


KBS

KBS is for mounting of multiple cables. The lock of KBS can easily be installed or re-installed for attaching of more cables. The KBS lock can also link with the cablemounting EC from 16-50 mm.



El.no	Type	Colour	L mm	Package
1342819	KBS 20	Grå	200	100

Technical info:

Material halogen-free, PA 6, UV-stabilised, temperature range: -20 - +85°C.