

EAN: 6414150065606

www.oras.com/en/products/oras/product/6375



Thermostatic bath and shower faucet which quickly and accurately reacts on the temperature changes of input water maintaining the requested temperature. The temperature control handle is equipped with a temperature regulator which can be bypassed by pressing the button (preset to 38°C). The spout acts as a diverter turning 90° and controlling the water flow either from the spout or from the shower. Oras Eterna's EcoLed press pad indicates with signal lights the ideal duration of shower considering water and energy consumption and acts as a flow regulator.

The faucet is delivered with litter filters and one-way valves.

- Bathroom, Shower
- Battery-operated, Thermostatic
- Wall mounted
- Chrome
- Temperature control handle
- diverter integrated in the spout
- press pad with EcoLed
- safety stop against scalding at 38°C, adjustable mix water temperature
- Litter filter(s), Non-return valve(s)

Technical data

Flow properties

Flow-rate at 300 kPa	0.33 / 0.20 l/s
Pressure loss with flow (0.3 l/s)	280 kPa

Technical properties

DN-size (nominal dimension)	DN15
Hot water supply	max. +70°C
Working pressure	100 - 1000 kPa
Connection size	G1/2
Installation width	CC150± 3 mm
Projection	120 mm
Material	brass

Software settings

Max. flow period	4 min
------------------	--------------

Electronic properties

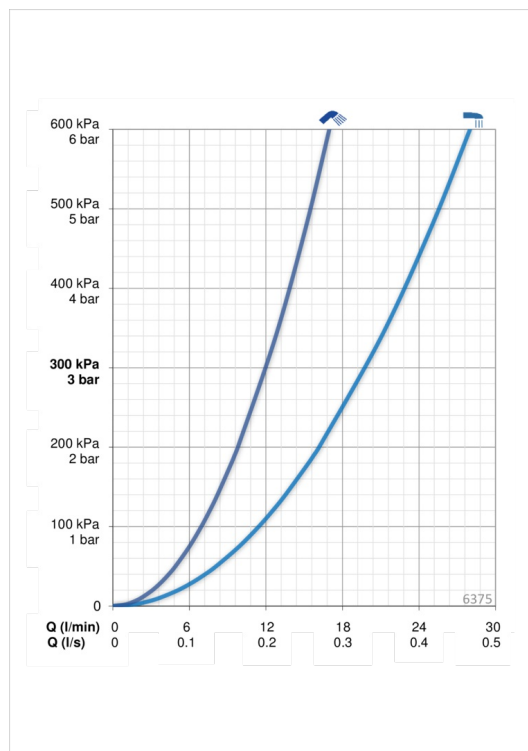
Battery	AA 1.5 V Lithium x 2
---------	-----------------------------

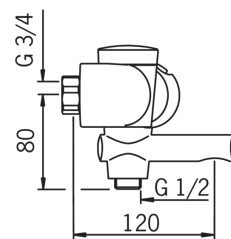
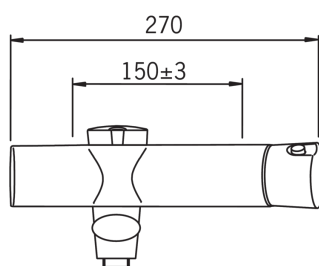
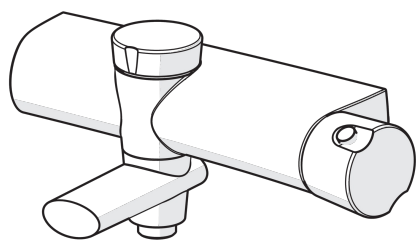
Regulations

EMC Directive	CE 2004/108/EY
EN standard	EN 1111 , EN 15091
Noise class	II / I (ISO 3822)
Protection class	IP 55

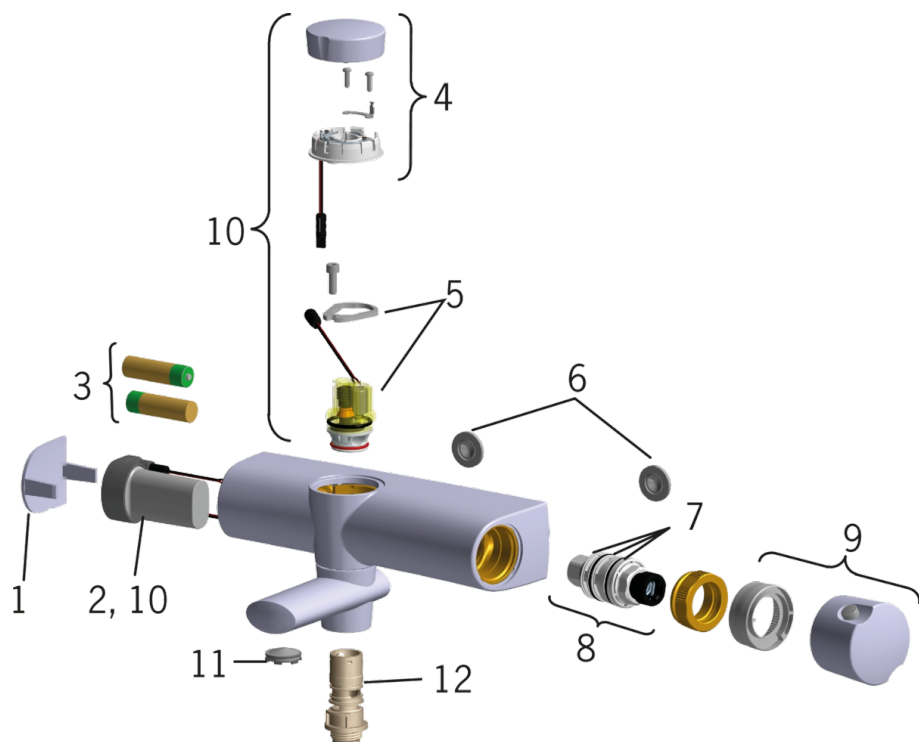
Type approvals

STF certificate	STF VTT-RTH-00064-12
ETA-Danmark	VA 1.43/20423
Sintef	Sintef Nr. 1804





Spare parts



SP6375

	Code
01	600609V
02	602269V
03	600599V
04	602180V
05	602182V
06	178375V
07	178796V
08	178780V
09	600612V
10	602303V
11	600679V
12	600680V