



AVK SUPA MAXI™ FLANGE ADAPTOR, PN16

633/00-002

Universal and tensile, A4 bolts, EPDM sealing, DN40-600



AVK's Supa Maxi™ range of universal tensile couplings sets a new standard. The patented SupaGrip™ sealing support system with flexible bracket ensures full support of the gasket and full tensile strength on all pipe types up to PN 16. Supa Maxi™ couplings are very easy to mount with the possibility of $\pm 4^\circ$ angular deflection, the permanent protection caps, the lifting eye and the fact that they are tightened from the sleeve side with no need for re-tightening the bolts.

Product description:

Supa Maxi™ flange adaptor - universal & tensile - A4 bolts and nuts for drinking water and neutral liquids -10°C to +70°C

Standards:

- Designed according to EN 14525
- Universal flange drilling to EN1092-2 (ISO 7005-2), PN 10/16

Test/Approvals:

- Approved according to ACS-France
- Approved according to KIWA Certificate K 66561
- Approved according to ÖVGW Certificate W 1.604
- Approved according to SVGW Certificate No. 1205-6041

Features:

- Patented SupaGrip™ sealing support system with flexible bracket ensures full support of the gasket even at minimum pipe size
- Full tensile strength on all pipes is ensured by two different metal grip segments - every other of gunmetal for PE/PVC and of hardened stainless steel for cast iron/ductile iron/steel/stainless steel/GRP/asbestos cement pipes. For PE pipes a support bush is to be used.
- Metal grip segments are mounted with pins for maximum durability
- $\pm 4^\circ$ angular deflection at max. 1.5 x PN16
- Large tolerance ranges
- All DN's are for PN16 (stainless steel, AC, Bi-PVC, and CFW GRP pipes max. PN10)
- Ductile iron body and bracket of cast steel, fusion bonded epoxy coating in compliance with DIN 3476 part 1 and EN 14901, GSK approved
- Gasket of drinking water approved EPDM rubber
- Bolts and nuts of acid-resistant stainless steel A4 are anti-friction coated to prevent galling
- Permanent protection cap protects the coupling during handling and installation
- The pipe will not move inwards when tightening
- Bolts are tightened from the sleeve side for full access when space is limited
- Re-tightening of bolts is not necessary
- Lifting eye in DN100-600
- DN50-600 are designed for PN16 (1.5 x 16 = 24 bar). DN50-300 are tested and approved for PN16 by KIWA according to EN 14525, and for DN350-600 KIWA EN 14525 approval is pending



kiwa



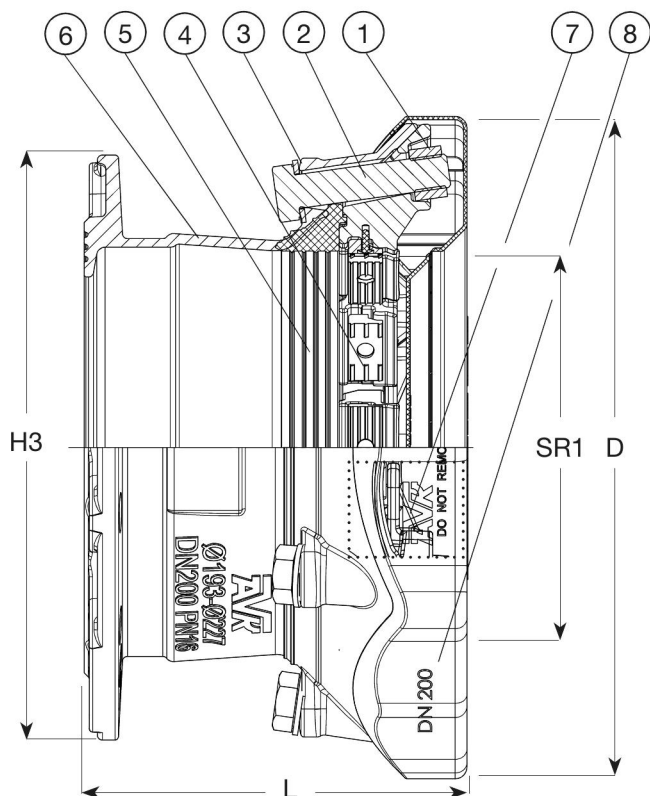
Expect ... **AVR**

The designs, materials and specifications shown are subject to change without notice. This is due to the continuous development of our product programme.

AVK SUPA MAXI™ FLANGE ADAPTOR, PN16

633/00-002

Universal and tensile, A4 bolts, EPDM sealing, DN40-600



DN	Supa Maxi end	Multi drilling*
40/50	3 x M14 x 75 mm	1, 2, 3, 4, 5, 8, 9, 10
50/65	3 x M16 x 75 mm	1, 2, 3, 4, 5, 8, 9, 10
80	3 x M16 x 75 mm	1, 2, 3, 4, 5, 8, 9, 10, 11, 12
100	4 x M16 x 75 mm	1, 2, 3, 4, 5, 6, 7, 8, 9, 11, 12
150	4 x M16 x 80 mm	1, 2, 5, 9, 11, 12
200	6 x M20 x 100 mm	1, 2, 5, 8, 9, 11, 12
250	6 x M20 x 100 mm	1, 2, 5
300	8 x M20 x 110 mm	1, 2, 5, 9, 11, 12
350	9 x M24 x 120 mm	1, 3, 10
400	10 x M24 x 120 mm	1, 2
450	12 x M24 x 120 mm	1
500	14 x M24 x 120 mm	1
600	18 x M24 x 130 mm	1

Drilling*		
1: ISO 7005-2, EN 1092-2: 1997, DIN 2501 (universal drilling)	6: BS 10 Table F	
2: ANSI B16.1 CL 125	7: BS 10 Table H	
3: BS 10 Table A	8: DIN 1882	
4: BS 10 Table D	9: AS 2129 Table D+E	
5: BS 10 Table E	10: AUG-TAU	
	11: AS 4087 Fig. B5	
	12: AS 4087 Table D	

Component list:

1. Nut	Stainless steel A4	5. Gasket	EPDM rubber
2. Bolt	Stainless steel A4	6. Sleeve	Ductile iron
3. Washer	Stainless steel A4	7. Bracket	Cast steel
4. Grip segment	Stainless steel / bronze CC491K	8. Protection cap	PE

Components may be substituted with equivalent or higher class materials without prior notification.

Reference nos. and dimensions:

AVK ref. no.	DN mm	Flange drilling	Seal range SR1 mm	L mm	D mm	H3 mm	Theoretical weight/kg
633-071-00-0063	40-50	10/16	48-71	197	200	165	5.0
633-091-00-0063	50-65	10/16	69-91	197	226	185	6.0
633-106-00-0063	80	10/16	82-106	198	235	200	6.5
633-133-00-0063	100	10/16	104-133	203	268	229	9.0
633-161-00-0063	100	10/16	132-159	198	285	229	11
633-188-00-0063	150	10/16	159-188	220	340	285	12
633-227-00-0063	200	10/16	193-227	243	389	343	19
633-257-00-0063	250	10/16	224-257	245	437	406	25
633-301-00-0063	250	10/16	266-301	254	476	406	28
633-356-00-0063	300	10/16	314-356	282	545	483	36
633-396-00-0063 (1)	350	PN10/16	352-396	419	612	540	87
633-442-00-0063 (1)	400	PN10/16	392-442	447	661	597	80
633-510-00-0063 (1)	450	PN10/16	448-510	614	740	660	145
633-552-00-0063 (1)	500	PN10/16	498-552	605	772	735	166
633-652-00-0063 (1)	600	PN10/16	604-652	634	872	850	213

(1) KIWA EN 14525 approval is pending