

ALUMINIUM TO COPPER CONNECTOR SM 2.11

TECHNICAL DATA

Type	SM 2.11
Al conductor	16 - 70 mm ²
Cu conductor	4 - 35 mm ²
Bolt	M8
Suitable plastic cover	SP 15
Test voltage	4 kV / 50 Hz/1min.
Weight	80 g
Tightening torque	20 Nm

USE Non tension aluminium to copper connections.

CONSTRUCTION

Component	Material
Body	Corrosion resistant aluminium alloy, tensile strength 300 N/mm ²
Screw	Hot-dip galvanised steel, strength class 8.8

The lower section of the body protects the bolt against corrosion and enables the connector to be easily reopened even after years of service. The groove for aluminium conductor is brushed, greased and toothed to ensure reliable connection. The groove for copper conductor is equipped with tin plated copper sections which are mechanically fixed into the body and the outer junction surfaces are painted to prevent corrosion.

INSTALLATION

It is not necessary to dismantle the connector during the installation work. Brush and grease the peeled aluminium conductor. Unscrew the bolt and the place the conductors into the grooves. Tighten the bolt with articulated spanner and fork wrench to torque of 20 Nm.

TOOLS REQUIRED

Articulated spanner ST 20
Fork wrench ST 34

MARKINGS

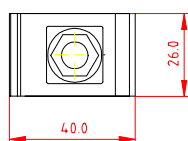
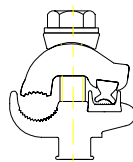
SM 2.11
Al 16 - 70 mm²
Cu 4 - 35 mm²

STANDARD

SFS 2663, SEN 241 510, SEN 245012, VDE 0220 Teil 1/11.71 and Teil 2/11.71

PACKING

100 pcs in a cardboard box. Each connector is individually packed in a plastic bag.



UTILITY NETWORKS

Ensto Sekko Oy
Kipinätie 1
PL 51
06101 Porvoo

Ensto Sekko Oy
Kipinätie 1
P.O. Box 51
06101 Porvoo
Finland

Tel. +358 (0) 204 76 21
Fax +358 (0) 204 76 2771
www.ensto.com

Reg. No. 166.780
Reg. office: Porvoo