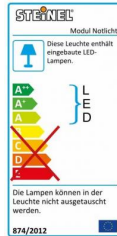
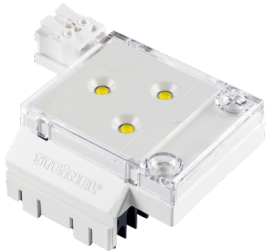


Accessory

RS PRO emergency light module

EAN 4007841002626



Functional description

Connection to the emergency power supply, three power-LEDs for plugging into the light, VDE-certified, EN 60598-2-22. The emergency light module provides light in the event of a mains power supply failure or fault (230 volts).. It is equipped with 3 power-LEDs for bright light when it's really needed.

Technical specifications

Mains power supply	230 V
Output	3 W
Lamp	Other
Protection class	II
Manufacturer's Warranty	5 years

Accessory

RS PRO emergency light module

EAN 4007841002626

Light distribution curve 1

