

## Irtolaipat PP - teräs

### Rakenne :

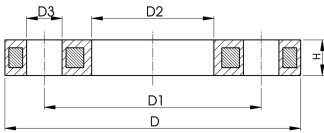
- Materiaali: PP (30 % lasikuituvahvistettu) teräsrenkaalla
- Metrimitoitus: ISO 7005, EN 1092, ISO 9624
- ASME: ANSI/ASME B 16.5 luokka 150, ASTM D2024, BS 1560, BS EN 1759
- Edellyttää kokoja d25 - d50 ja d90 varten tarkoitettujen ANSI-erikoislaippakaulusten käyttöä

AL: pulttinreikien lukumäärä

<sup>1)</sup> FM 1613-hyväksyntä – 15 baaria

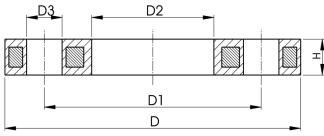
<sup>2)</sup> Profiloitu irtolaippa

|      | d<br>(mm) | DN<br>(mm) | D<br>(mm) | PN<br>(bar) | Standard                | Bolt<br>circle     | Design                   |
|------|-----------|------------|-----------|-------------|-------------------------|--------------------|--------------------------|
|      | 20        | 15         | 95        | 16          | Metrimitoitus           | PN10               | Pusku- /<br>Muhvihitsaus |
|      | 20        | 15         | 95        | 16          | ASME                    | class 150          | Pusku- /<br>Muhvihitsaus |
|      | 25        | 20         | 105       | 16          | Metrimitoitus           | PN10               | Pusku- /<br>Muhvihitsaus |
|      | 25        | 20         | 105       | 16          | ASME                    | class 150          | Pusku- /<br>Muhvihitsaus |
|      | 32        | 25         | 115       | 16          | Metrimitoitus           | PN10               | Pusku- /<br>Muhvihitsaus |
|      | 32        | 25         | 115       | 16          | ASME                    | class 150          | Pusku- /<br>Muhvihitsaus |
|      | 40        | 32         | 140       | 16          | Metrimitoitus           | PN10               | Pusku- /<br>Muhvihitsaus |
|      | 40        | 32         | 140       | 16          | ASME                    | class 150          | Pusku- /<br>Muhvihitsaus |
|      | 50        | 40         | 150       | 16          | Metrimitoitus           | PN10               | Pusku- /<br>Muhvihitsaus |
|      | 50        | 40         | 150       | 16          | ASME                    | class 150          | Pusku- /<br>Muhvihitsaus |
|      | 63        | 50         | 165       | 16          | Metrimitoitus           | PN10               | Pusku- /<br>Muhvihitsaus |
|      | 63        | 50         | 165       | 16          | ASME                    | class 150          | Pusku- /<br>Muhvihitsaus |
|      | 75        | 65         | 185       | 16          | Metrimitoitus           | PN10               | Pusku- /<br>Muhvihitsaus |
|      | 75        | 65         | 185       | 16          | ASME                    | class 150          | Pusku- /<br>Muhvihitsaus |
| 1    | 90        | 80         | 200       | 16          | Metrimitoitus           | PN10               | Puskuhitsaus             |
|      | 90        | 80         | 200       | 16          | Metrimitoitus           | PN10               | Muhvihitsaus             |
|      | 90        | 80         | 200       | 16          | Metrimitoitus           | PN10               | Puskuhitsaus             |
|      | 90        | 80         | 200       | 16          | ASME                    | class 150          | Muhvihitsaus             |
|      | 90        | 80         | 200       | 16          | ASME                    | class 150          | Puskuhitsaus             |
| 1    | 110       | 100        | 223       | 16          | Metrimitoitus           | PN10               | Puskuhitsaus             |
|      | 110       | 100        | 220       | 16          | Metrimitoitus           | PN10               | Muhvihitsaus             |
|      | 110       | 100        | 220       | 16          | Metrimitoitus           | PN10               | Puskuhitsaus             |
|      | 110       | 100        | 229       | 16          | ASME                    | class 150          | Muhvihitsaus             |
|      | 110       | 100        | 229       | 16          | ASME                    | class 150          | Puskuhitsaus             |
| 1    | 125       | 100        | 223       | 16          | Metrimitoitus           | PN10               | Puskuhitsaus             |
|      | 125       | 100        | 220       | 16          | Metrimitoitus           | PN10               | Puskuhitsaus             |
|      | 125       | 125        | 250       | 16          | Metrimitoitus           | PN10               | Muhvihitsaus             |
| 1    | 140       | 125        | 250       | 16          | Metrimitoitus           | PN10               | Puskuhitsaus             |
|      | 140       | 125        | 250       | 16          | Metrimitoitus           | PN10               | Puskuhitsaus             |
|      | 140       | 125        | 250       | 16          | Metrimitoitus           | PN10               | Muhvihitsaus             |
| 1    | 160       | 150        | 285       | 16          | Metrimitoitus           | PN10               | Puskuhitsaus             |
|      | 160       | 150        | 285       | 16          | Metrimitoitus /<br>ASME | PN10/<br>class 150 | Puskuhitsaus             |
|      | 160       | 150        | 285       | 16          | Metrimitoitus /<br>ASME | PN10/<br>class 150 | Muhvihitsaus             |
| 1    | 180       | 150        | 285       | 16          | Metrimitoitus           | PN10               | Puskuhitsaus             |
|      | 180       | 150        | 285       | 16          | Metric/ASME             | PN10               | Puskuhitsaus             |
| 1, 2 | 200       | 200        | 344       | 16          | Metrimitoitus           | PN16               | Puskuhitsaus             |
|      | 200       | 200        | 340       | 16          | Metrimitoitus /<br>ASME | PN10/<br>class 150 | Puskuhitsaus             |
|      | 200       | 200        | 340       | 16          | Metrimitoitus /<br>ASME | PN10/<br>class 150 | Muhvihitsaus             |
| 1, 2 | 225       | 200        | 344       | 16          | Metrimitoitus           | PN16               | Puskuhitsaus             |



|      | d<br>(mm) | DN<br>(mm) | D<br>(mm) | PN<br>(bar) | Standard             | Bolt<br>circle     | Design       |
|------|-----------|------------|-----------|-------------|----------------------|--------------------|--------------|
|      | 225       | 200        | 340       | 16          | Metrimitoitus / ASME | PN10/<br>class 150 | Puskuhitsaus |
|      | 225       | 200        | 340       | 16          | Metrimitoitus / ASME | PN10/<br>class 150 | Muhvihitsaus |
| 1, 2 | 250       | 250        | 410       | 16          | Metrimitoitus        | PN16               | Puskuhitsaus |
|      | 250       | 225        | 395       | 16          | Metrimitoitus        | PN10               | Muhvihitsaus |
|      | 250       | 250        | 395       | 16          | Metrimitoitus        | PN10               | Puskuhitsaus |
|      | 250       | 250        | 395       | 16          | Metrimitoitus        | PN10               | Muhvihitsaus |
| 1, 2 | 280       | 250        | 410       | 16          | Metrimitoitus        | PN16               | Puskuhitsaus |
|      | 280       | 250        | 395       | 16          | Metrimitoitus        | PN10               | Puskuhitsaus |
|      | 280       | 250        | 395       | 16          | Metrimitoitus        | PN10               | Muhvihitsaus |
| 1, 2 | 315       | 300        | 455       | 16          | Metrimitoitus        | PN16               | Puskuhitsaus |
|      | 315       | 300        | 445       | 16          | Metrimitoitus        | PN10               | Puskuhitsaus |
|      | 315       | 300        | 445       | 16          | Metrimitoitus        | PN10               | Muhvihitsaus |
|      | 315       | 300        | 483       | 10          | ASME                 | class 150          | Puskuhitsaus |
| 1, 2 | 355       | 350        | 521       | 16          | Metrimitoitus        | PN16               | Puskuhitsaus |
|      | 355       | 350        | 515       | 16          | Metrimitoitus        | PN10               | Puskuhitsaus |
|      | 355       | 350        | 515       | 16          | Metrimitoitus        | PN10               | Muhvihitsaus |
|      | 355       | 350        | 540       | 10          | ASME                 | class 150          | Puskuhitsaus |
| 1, 2 | 400       | 400        | 582       | 16          | Metrimitoitus        | PN16               | Puskuhitsaus |
|      | 400       | 400        | 574       | 16          | Metrimitoitus        | PN10               | Puskuhitsaus |
|      | 400       | 400        | 574       | 16          | Metrimitoitus        | PN10               | Muhvihitsaus |
|      | 400       | 400        | 597       | 10          | ASME                 | class 150          | Puskuhitsaus |
| 1, 2 | 450       | 500        | 685       | 10          | Metrimitoitus        | PN10               | Puskuhitsaus |
| 1, 2 | 500       | 500        | 685       | 10          | Metrimitoitus        | PN10               | Puskuhitsaus |
| 2    | 560       | 600        | 796       | 10          | Metrimitoitus        | PN10               | Puskuhitsaus |
| 2    | 630       | 600        | 800       | 10          | Metrimitoitus        | PN10               | Puskuhitsaus |
| 2    | 710       | 700        | 912       | 6           | Metrimitoitus        | PN10               | Puskuhitsaus |
| 2    | 800       | 800        | 1026      | 6           | Metrimitoitus        | PN10               | Puskuhitsaus |
| 2    | 900       | 900        | 1129      | 6           | Metrimitoitus        | PN10               | Puskuhitsaus |
|      | 250       | 250        | 406       | 10          | ASME                 | class 150          | Puskuhitsaus |
|      | 450       | 500        | 712       | 10          | ASME                 | class 150          | Puskuhitsaus |

|   | d<br>(mm) | DN<br>(mm) | Koodi              | LVI              | Paino<br>(kg) | D1<br>(mm) | D2<br>(mm) | D3<br>(mm) | H max.<br>(mm) | AL | SC  |
|---|-----------|------------|--------------------|------------------|---------------|------------|------------|------------|----------------|----|-----|
|   | 20        | 15         | <b>727 700 206</b> | <b>183 41 33</b> | 0,216         | 65         | 28         | 14         | 12             | 4  | M12 |
|   | 20        | 15         | <b>727 701 206</b> |                  | 0,213         | 60         | 28         | 16         | 12             | 4  | M12 |
|   | 25        | 20         | <b>727 700 207</b> | <b>183 41 34</b> | 0,279         | 75         | 34         | 14         | 12             | 4  | M12 |
|   | 25        | 20         | <b>727 701 207</b> |                  | 0,260         | 70         | 34         | 16         | 12             | 4  | M12 |
|   | 32        | 25         | <b>727 700 208</b> | <b>183 41 35</b> | 0,429         | 85         | 42         | 14         | 16             | 4  | M12 |
|   | 32        | 25         | <b>727 701 208</b> |                  | 0,416         | 79         | 42         | 16         | 16             | 4  | M12 |
|   | 40        | 32         | <b>727 700 209</b> | <b>183 41 36</b> | 0,621         | 100        | 51         | 18         | 16             | 4  | M16 |
|   | 40        | 32         | <b>727 701 209</b> |                  | 0,730         | 89         | 51         | 16         | 16             | 4  | M16 |
|   | 50        | 40         | <b>727 700 210</b> | <b>183 41 37</b> | 0,722         | 110        | 62         | 18         | 20             | 4  | M16 |
|   | 50        | 40         | <b>727 701 210</b> |                  | 0,809         | 98         | 62         | 16         | 18             | 4  | M16 |
|   | 63        | 50         | <b>727 700 211</b> | <b>183 40 40</b> | 0,900         | 125        | 78         | 18         | 20             | 4  | M16 |
|   | 63        | 50         | <b>727 701 211</b> |                  | 0,866         | 121        | 78         | 19         | 18             | 4  | M16 |
|   | 75        | 65         | <b>727 700 212</b> | <b>183 41 38</b> | 1,110         | 145        | 92         | 18         | 20             | 4  | M16 |
|   | 75        | 65         | <b>727 701 212</b> |                  | 1,117         | 140        | 92         | 19         | 18             | 4  | M16 |
| 1 | 90        | 80         | <b>724 700 313</b> |                  | 1,390         | 160        | 108        | 18         | 20             | 8  | M16 |
|   | 90        | 80         | <b>727 700 213</b> | <b>183 41 39</b> | 1,369         | 160        | 110        | 18         | 20             | 8  | M16 |
|   | 90        | 80         | <b>727 700 313</b> | <b>183 40 31</b> | 1,390         | 160        | 108        | 18         | 20             | 8  | M16 |
|   | 90        | 80         | <b>727 701 213</b> |                  | 1,492         | 152        | 110        | 19         | 20             | 4  | M16 |
|   | 90        | 80         | <b>727 701 313</b> |                  | 1,499         | 152        | 108        | 19         | 20             | 4  | M16 |
| 1 | 110       | 100        | <b>724 700 314</b> |                  | 1,407         | 180        | 128        | 18         | 20             | 8  | M16 |
|   | 110       | 100        | <b>727 700 214</b> | <b>183 41 40</b> | 1,522         | 180        | 133        | 18         | 20             | 8  | M16 |
|   | 110       | 100        | <b>727 700 314</b> | <b>183 40 32</b> | 1,407         | 180        | 128        | 18         | 20             | 8  | M16 |
|   | 110       | 100        | <b>727 701 214</b> |                  | 1,695         | 190        | 133        | 19         | 20             | 8  | M16 |
|   | 110       | 100        | <b>727 701 314</b> |                  | 1,739         | 190        | 128        | 19         | 20             | 8  | M16 |
| 1 | 125       | 100        | <b>724 700 315</b> |                  | 1,408         | 180        | 135        | 18         | 20             | 8  | M16 |



|      | d<br>(mm) | DN<br>(mm) | Koodi              | LVI              | Paino<br>(kg) | D1<br>(mm) | D2<br>(mm) | D3<br>(mm) | H max.<br>(mm) | AL | SC  |
|------|-----------|------------|--------------------|------------------|---------------|------------|------------|------------|----------------|----|-----|
|      | 125       | 100        | <b>727 700 315</b> | <b>183 41 51</b> | 1,408         | 180        | 135        | 18         | 20             | 8  | M16 |
|      | 125       | 125        | <b>727 700 815</b> | <b>183 41 41</b> | 2,475         | 210        | 150        | 18         | 26             | 8  | M16 |
| 1    | 140       | 125        | <b>724 700 316</b> |                  | 2,300         | 210        | 158        | 18         | 24             | 8  | M16 |
|      | 140       | 125        | <b>727 700 716</b> | <b>183 41 52</b> | 2,318         | 210        | 158        | 18         | 24             | 8  | M16 |
|      | 140       | 125        | <b>727 700 816</b> | <b>183 41 42</b> | 2,033         | 210        | 167        | 18         | 26             | 8  | M16 |
| 1    | 160       | 150        | <b>724 700 317</b> |                  | 3,500         | 240        | 178        | 22         | 28             | 8  | M20 |
|      | 160       | 150        | <b>727 700 717</b> | <b>183 40 33</b> | 3,491         | 240        | 178        | 22         | 24             | 8  | M20 |
|      | 160       | 150        | <b>727 700 817</b> | <b>183 41 43</b> | 3,167         | 240        | 190        | 22         | 26             | 8  | M20 |
| 1    | 180       | 150        | <b>724 700 318</b> |                  | 3,100         | 240        | 188        | 22         | 28             | 8  | M20 |
|      | 180       | 150        | <b>727 700 718</b> | <b>183 41 53</b> | 3,108         | 240        | 188        | 22         | 24             | 8  | M20 |
| 1, 2 | 200       | 200        | <b>724 700 319</b> | <b>183 99 83</b> | 3,549         | 295        | 235        | 22         | 31             | 12 | M20 |
|      | 200       | 200        | <b>727 700 719</b> | <b>183 40 34</b> | 5,600         | 295        | 235        | 22         | 27             | 8  | M20 |
|      | 200       | 200        | <b>727 700 819</b> | <b>183 41 44</b> | 6,143         | 295        | 226        | 22         | 29             | 8  | M20 |
| 1, 2 | 225       | 200        | <b>724 700 320</b> | <b>183 99 84</b> | 3,380         | 295        | 238        | 22         | 31             | 12 | M20 |
|      | 225       | 200        | <b>727 700 720</b> | <b>183 40 41</b> | 5,533         | 295        | 238        | 22         | 27             | 8  | M20 |
|      | 225       | 200        | <b>727 700 820</b> | <b>183 41 45</b> | 4,448         | 295        | 250        | 22         | 29             | 8  | M20 |
| 1, 2 | 250       | 250        | <b>724 700 321</b> | <b>183 99 85</b> | 6,390         | 355        | 288        | 26         | 35             | 12 | M24 |
|      | 250       | 225        | <b>727 700 031</b> | <b>183 41 46</b> | 8,340         | 325        | 277        | 22         | 32             | 8  | M20 |
|      | 250       | 250        | <b>727 700 721</b> | <b>183 40 35</b> | 6,632         | 350        | 288        | 22         | 30             | 12 | M20 |
|      | 250       | 250        | <b>727 700 821</b> |                  | 7,179         | 350        | 277        | 22         | 32             | 12 | M20 |
| 1, 2 | 280       | 250        | <b>724 700 322</b> | <b>183 99 86</b> | 6,310         | 355        | 294        | 26         | 36             | 12 | M24 |
|      | 280       | 250        | <b>727 700 722</b> | <b>183 41 54</b> | 6,573         | 350        | 294        | 22         | 30             | 12 | M20 |
|      | 280       | 250        | <b>727 700 822</b> | <b>183 41 47</b> | 5,547         | 350        | 310        | 22         | 32             | 12 | M20 |
| 1, 2 | 315       | 300        | <b>724 700 323</b> | <b>183 99 87</b> | 9,740         | 410        | 338        | 26         | 43             | 12 | M24 |
|      | 315       | 300        | <b>727 700 723</b> | <b>183 40 42</b> | 7,903         | 400        | 338        | 22         | 34             | 12 | M20 |
|      | 315       | 300        | <b>727 700 823</b> | <b>183 41 48</b> | 6,980         | 400        | 348        | 22         | 36             | 12 | M20 |
|      | 315       | 300        | <b>727 701 322</b> |                  | 11,800        | 432        | 338        | 25         | 34             | 12 | M24 |
| 1, 2 | 355       | 350        | <b>724 700 324</b> | <b>183 99 88</b> | 15,203        | 470        | 376        | 26         | 55             | 16 | M24 |
|      | 355       | 350        | <b>727 700 724</b> | <b>183 41 55</b> | 14,587        | 460        | 376        | 23         | 40             | 16 | M20 |
|      | 355       | 350        | <b>727 700 824</b> | <b>183 41 49</b> | 12,465        | 460        | 388        | 23         | 42             | 16 | M20 |
|      | 355       | 350        | <b>727 701 323</b> |                  | 17,900        | 476        | 376        | 29         | 42             | 12 | M27 |
| 1, 2 | 400       | 400        | <b>724 700 325</b> | <b>183 99 89</b> | 20,600        | 525        | 430        | 30         | 56             | 28 | M27 |
|      | 400       | 400        | <b>727 700 725</b> | <b>183 41 56</b> | 20,034        | 515        | 430        | 26         | 40             | 16 | M24 |
|      | 400       | 400        | <b>727 700 825</b> | <b>183 41 50</b> | 17,607        | 515        | 442        | 26         | 42             | 16 | M24 |
|      | 400       | 400        | <b>727 701 324</b> |                  | 24,500        | 539        | 429        | 29         | 44             | 16 | M27 |
| 1, 2 | 450       | 500        | <b>724 700 426</b> | <b>183 38 05</b> | 25,600        | 620        | 517        | 26         | 56             | 20 | M24 |
| 1, 2 | 500       | 500        | <b>724 700 427</b> | <b>183 38 06</b> | 21,061        | 620        | 533        | 26         | 56             | 20 | M24 |
| 2    | 560       | 600        | <b>724 700 428</b> | <b>183 38 07</b> | 35,000        | 725        | 618        | 30         | 68             | 20 | M27 |
| 2    | 630       | 600        | <b>724 700 429</b> | <b>183 38 08</b> | 28,500        | 725        | 645        | 30         | 68             | 20 | M27 |
| 2    | 710       | 700        | <b>724 700 430</b> |                  | 25,500        | 840        | 740        | 30         | 49             | 24 | M27 |
| 2    | 800       | 800        | <b>724 700 431</b> |                  | 39,300        | 950        | 843        | 33         | 58             | 24 | M30 |
| 2    | 900       | 900        | <b>724 700 432</b> |                  | 48,500        | 1050       | 947        | 33         | 62             | 28 | M30 |
|      | 250       | 250        | <b>727 701 321</b> |                  | 6,000         | 362        | 293        | 25         | 30             | 12 | M24 |
|      | 450       | 500        | <b>727 701 325</b> |                  | 33,600        | 635        | 540        | 32         | 53             | 20 | M30 |

Tekniset tiedot eivät ole sitovia. Tiedot eivät suoraan edusta perusteltuja ominaispiirteitä, taattuja ominaisuuksia tai takuuta kestävydestä. Pidätämme oikeuden muuttaa tietoja. Sovellamme yleisiä myyntiehtojamme.

Georg Fischer Piping Systems Ltd, Postfach, CH-8201 Schaffhausen/Switzerland Phone +41 -(0)52-631 1111 e-mail: info.ps@georgfischer.com Internet: <http://www.gfps.com>