

KOSTAL Energy Meter

The simple and cost-effective energy meter with basic functions



KOSTAL energy meters are cost-effective and come with a wide range of basic functions, enabling you to use your solar system in a variety of ways. The table below provides an overview.

The KOSTAL Energy Meters with the PLENTICORE plus hybrid inverter are immediately ready for use with a connected battery storage unit and are pre-configured as standard. This means a direct connection is possible without any further settings. **The most recent firmware update for the PLENTICORE plus (version 1.25 or higher) is required.**

KOSTAL Energy Meters: Comparison of device combinations and range of functions

Device combination	KSEM	KEM C	KEM P
PLENTICORE plus (PV)	✓	✓	✓
PLENTICORE plus with battery storage	✓	✓	✓
1× PLENTICORE plus (PV) + 1× PLENTICORE plus with battery storage	✓	✗	✗
2× PLENTICORE plus (PV)	✓	✗	✗
PIKO MP plus (PV)	✓	✗	✗
PIKO MP plus with battery storage	✓	✗	✗

Function	KSEM	KEM C	KEM P
24-hour home consumption measurement	✓	✓	✓
Dynamic active power control	✓	✓	✓
Connection via pre-configured RS485 interfaces	✓	✓	✓
Operation of a connected battery storage unit	✓	✓	✓
ENEKTOR wallbox with convenience function	✓	✗	✗

Note: The KOSTAL Energy Meters of the P and C series have the same range of functions. The series designation makes it easier to select the right device.

Best results, little effort and instantly compatible with KOSTAL's PLENTICORE plus hybrid inverter

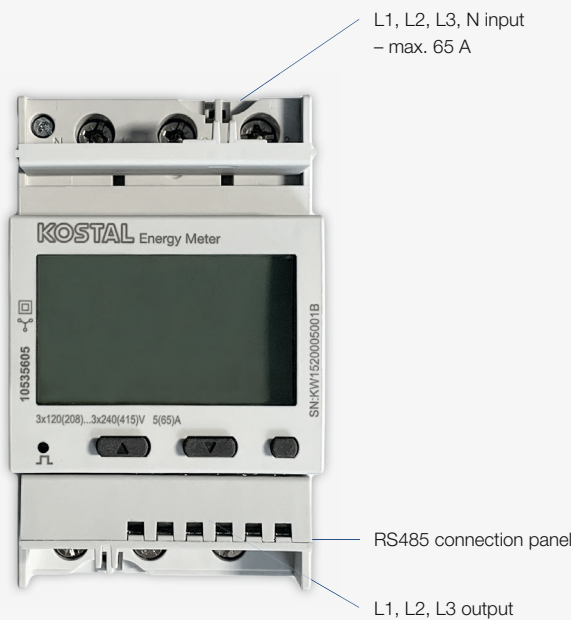
The KOSTAL Energy Meters are the quick and easy alternative for PV systems that have an inverter output of up to 10 kVA and are combined with a connected battery. In addition, the KOSTAL Energy Meters ensure optimal visualisation of self-consumption and self-sufficiency on the KOSTAL Solar Portal and the KOSTAL Solar App.

The 3-phase energy measurement via the pre-configured Modbus RTU standard interfaces (RS485) takes place in real time. Separate access via an Energy Meter Webserver is not necessary.

Installation instructions

The KOSTAL Energy Meter (KEM) is connected differently from the KOSTAL Smart Energy Meter (KSEM): **KEM C and KEM P are connected on the input side (grid side at the grid connection point) from above.** With the KOSTAL Smart Energy Meter, the grid connection is from below. For detailed instructions, please refer to the installation manual.

KEM C



KEM P



Installation

The device is latched onto a mounting rail in the control cabinet. It can be installed in any position provided that the LCD can still be read.

Installation

1. Fit KEM on DIN rail.
2. Open connection covers.
3. Connect mains cables (AC).
4. Connect the RS485 interface to the inverter.
5. Close connection covers.
6. Switch on the power supply and check that the device is working properly.

Smart connections.

A complete and easy-to-follow installation guide can be found in the Download section of our website www.kostal-solar-electric.com/download