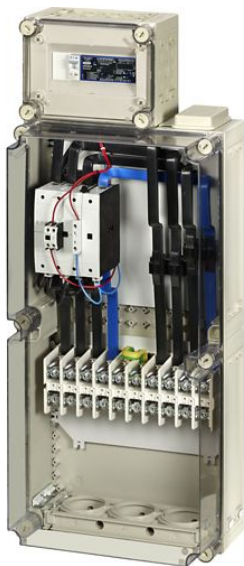


# Eaton 198276

Catalog Number: 198276

Eaton Moeller® series NAS Mains and system-protection device combination in the housing, + terminals K95, 160A, 4p NAS160-CI-2-K95



## General specifications

<b>Product Name</b>	<b>Catalog Number</b>
Eaton Moeller® series NAS Mains and system-protection device combination	198276
	<b>EAN</b>
	4015081958351
<b>Product Length/Depth</b>	<b>Product Height</b>
225 mm	688 mm
<b>Product Width</b>	<b>Product Weight</b>
375 mm	23.77 kg
<b>Certifications</b>	
VDE-AR-N 4105	

## Tekniset tuotetiedot

### Product category

Switchgear for renewable energies

### 10.11 Short-circuit rating

Is the panel builder's responsibility. The specifications for the switchgear must be observed.

### Ambient operating temperature (enclosed) - min

-20 °C

### Accessory/spare part type

Other

### Terminal capacity

Round stranded (Cu)

1 x 16 - 95 mm<sup>2</sup>, Cu/Al cable, Main cables

Round solid (Cu)

Sectoral solid (Al)

1 x 35 - 70 mm<sup>2</sup>, Al cable, Main cables

Sectoral stranded (Cu)

### 10.4 Clearances and creepage distances

Meets the product standard's requirements.

### 10.12 Electromagnetic compatibility

Is the panel builder's responsibility. The specifications for the switchgear must be observed.

### 10.2.5 Lifting

Does not apply, since the entire switchgear needs to be evaluated.

### Switching time

40 ms, Opening delay, Changeover time at 100 % US  
(recommended value)

< 150 ms with NA protection relay, Total opening delay

### Ambient operating temperature (enclosed) - max

40 °C

### 10.2.3.1 Verification of thermal stability of enclosures

Meets the product standard's requirements.

### Ambient storage temperature - min

-40 °C

### Short-circuit current

100 kA (prospective)

### Rated breaking capacity at 380/400 V

950 A

## Lisämateriaalit

### Asennusohjeet

IL024003ZU

### mCAD model

nas125\_160\_ci\_1\_2\_k95.stp

nas125\_160\_ci\_1\_2\_k95.dwg

### Piirroksset

eaton-motor-installation-protection-nas-dimensions-002.eps

eaton-motor-installation-protection-nas-3-d-drawing-002.eps

eaton-motor-installation-protection-nas-3-d-drawing-003.eps

### Sertifikaattiraportit

DA-DC-00003916.pdf

#### Power consumption

180 VA at AC, 50/60 Hz (power consumption of the coil in a cold state and 1.0 x Us, Pick-up power)

3.1 VA at AC, 50/60 Hz (power consumption of the coil in a cold state and 1.0 x Us, Sealing power)

#### Rated operational power at 380/400 V, 50 Hz

100 kW

#### 10.2.3.2 Verification of resistance of insulating materials to normal heat

Meets the product standard's requirements.

#### Rated control supply voltage (Us) at AC, 50 Hz - max

230 V

#### 10.2.3.3 Resist. of insul. mat. to abnormal heat/fire by internal elect. effects

Meets the product standard's requirements.

#### 10.8 Connections for external conductors

Is the panel builder's responsibility.

#### Connection type

Screw terminals

#### Protection

Central mains and system

protection

NA protection to VDE-AR-N

4105

#### 10.9.2 Power-frequency electric strength

Is the panel builder's responsibility.

#### Degree of protection

IP65

#### Rated making capacity up to 690 V (cos phi to IEC/EN 60947-3)

1330 A

#### Ambient operating temperature - max

40 °C

#### Ambient storage temperature - max

80 °C

#### Rated operational voltage (Ue) at AC - max

400 V

#### 10.7 Internal electrical circuits and connections

Is the panel builder's responsibility.

#### Number Of Poles

Four-pole

#### 10.9.3 Impulse withstand voltage

Is the panel builder's responsibility.

#### Ambient operating temperature - min

-20 °C

#### Duty factor

100 %

#### Type

Mains and system-protection device combination

#### 10.2.2 Corrosion resistance

Meets the product standard's requirements.

#### 10.6 Incorporation of switching devices and components

Does not apply, since the entire switchgear needs to be evaluated.

#### 10.2.7 Inscriptions

Meets the product standard's requirements.

#### 10.5 Protection against electric shock

Does not apply, since the entire switchgear needs to be evaluated.

#### Short-circuit protection rating

Max. 250 A gG/gL 500 V, Fuse, 400V

#### 10.13 Mechanical function

The device meets the requirements, provided the information in the instruction leaflet (IL) is observed.

#### 10.2.6 Mechanical impact

Does not apply, since the entire switchgear needs to be evaluated.

#### 10.9.4 Testing of enclosures made of insulating material

Is the panel builder's responsibility.

#### 10.3 Degree of protection of assemblies

Does not apply, since the entire switchgear needs to be evaluated.



Eaton Corporation plc  
Eaton House  
30 Pembroke Road  
Dublin 4, Ireland  
Eaton.com

© 2024 Eaton. Kaikki  
oikeudet pidätetään.

Eaton is a registered trademark.

All other trademarks are  
property of their respective  
owners.



[Eaton.com/socialmedia](https://www.eaton.com/socialmedia)