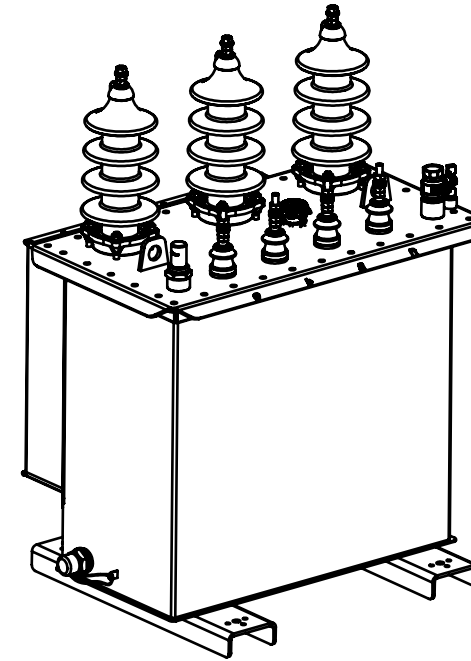
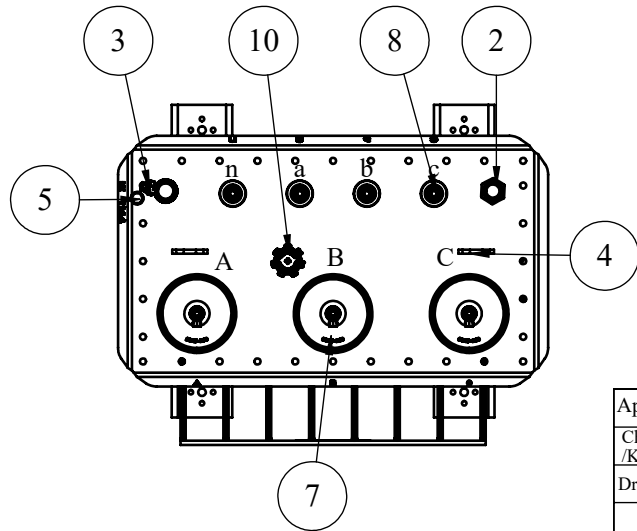


1	Corrugated wall
2	Oil Level Indicator
3	Oil filling valve
4	Lifting lugs
5	Earthing terminal
6	Oil sampling & drain valve
7	H.V Bushings
8	L.V. Bushings(without flag)
9	Rating plate
10	Tap changer
Active Part Weight = 310 kg	
Oil Weight = 110 kg	
Total Weight = 480 kg	



ALL WEIGHTS AND DIMENSIONS HAVE +- %10 TOLERANCES

App./Onay				Kritiklik sınıfı /Criticality Class:
Checked /Kontrol	Samet BALCI	8.12.2020		
Drawn/Çizen	Ergün ÇETINKAYA	8.12.2020		Tolerans sınıfı / Tolerance Class:
	Adı Soyadı/Name Surname	Tarih/Date	İmza/Sign	ISO 2768-c
	<u>Malzeme/Material</u>	<u>Kaplama/Coat:</u>	<u>Renk/Color:</u>	Parça Adı/Part Name:
SERTLİK/HARDNER:		Sac Kalın./ Sheet Thic.: -mm	<u>Adet/Tk. Qty/Ass.:</u> -	YT-1144-50 kVA 20,5-0,41 KV-GENERAL ARRANGEMENT DRAW.
<u>ÖLÇEK/SCALE</u> 1:15	Kontrol ölçüleri/ Control Dimensions	Weight/ Ağırlık: -kg	SHEET 1 OF 1	<b>STOK NO:</b>

**ULUSOY ELEKTRİK**  
İMALAT TAAHHÜT  
TİCARET A.Ş.



A4