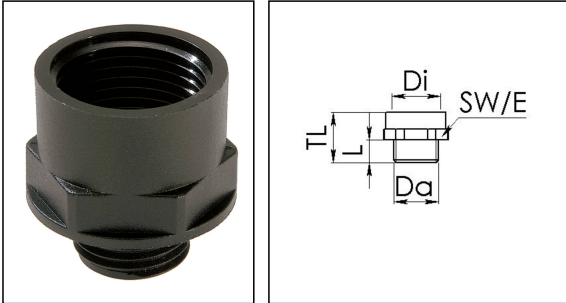


EX-APM 42/50

Ex-adaptor, polyamide, Pg42-M50



Products may differ in size, colour and appearance to those shown. If you require further information or customisation, please contact us directly.



Material	Polyamide, fibre reinforced
Material sealing gasket	EPDM
Temp. range min	-40 °C
Temp. range max	75 °C
Protection class	IP66 / IP68 (5 bar 30 min)
Type of protection	Ex eb, Ex tb
Ex-Certificate	IECEX, ATEX
Thread type outer	PG
Ø outer thread	42
Length screw-in thread L	14 mm
Thread type inner	M
Ø inner thread	50
Lead inner	1,5
Length internal thread	15,5 mm
Key width SW	60 mm
Collar diameter (E)	67 mm
Total length TL	32 mm
Form	A
Product Color	RAL 9005
Equipment	Incl. connection thread gasket
Order no. RAL 9005	10064781
Type	EX-APM 42/50
Packing unit	5
ETIM-Classification	EC000938

Your Contact:

WISKA Hoppmann GmbH

Kisdorfer Weg 28 · 24568 Kaltenkirchen · Germany

☎ +49-4191-508-0 · 📠 +49-4191-508-209

contact@wiska.de · www.wiska.com

Recommended accessories

MUG 42

10060688

10.07.2020

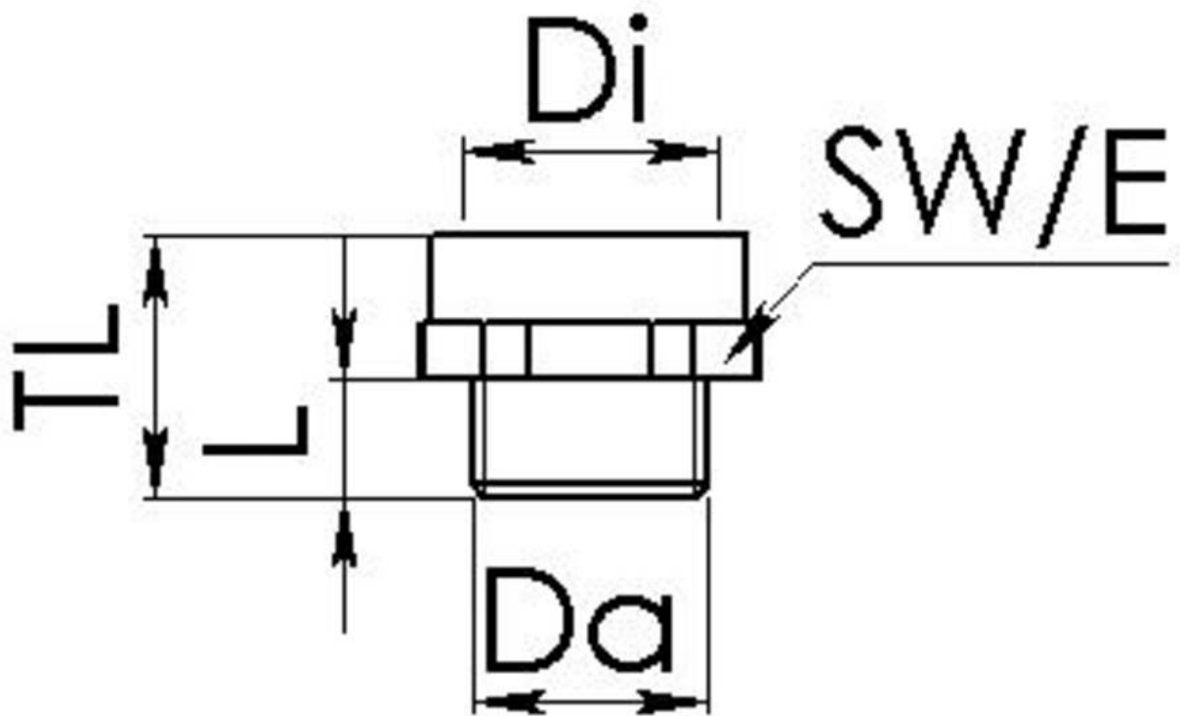
Your Contact:

WISKA Hoppmann GmbH

Kisdorfer Weg 28 · 24568 Kaltenkirchen · Germany

☎ +49-4191-508-0 · 📠 +49-4191-508-209

contact@wiska.de · www.wiska.com



Your Contact:

WISKA Hoppmann GmbH

Kisdorfer Weg 28 · 24568 Kaltenkirchen · Germany

☎ +49-4191-508-0 · 📠 +49-4191-508-209

contact@wiska.de · www.wiska.com