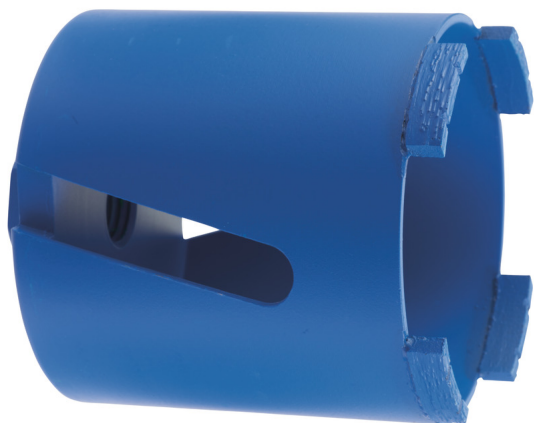


## DCU 82 mm M16 - 1 pc | Dry diamond drilling for electrical sockets without dust extraction - DCU / DCH



- 7 mm high segments.
- Laser welded segments for extra durability.
- Suitable for installation of electrical sockets and junction boxes.
- Use with the machine set to rotary only, not suitable for hammer action.

DCU 82 mm M16 - 1 pc	
Aerated and breeze concrete blocks	Limited suitability
Artificial stone	Not suitable
Description	DCU 82
Diameter (mm)	82
Granite	Not suitable
Lime and sandstone blocks soft and abrasive	Most suitable
Lime and sandstone blocks very hard	Limited suitability
Marble	Not suitable
Pack quantity	1
Total length (mm)	90
Working length (mm)	60